

Updated 10/6/2013: Must Read

Head of the Quinobequin

(aka the Charles River)

**3,000m Head Race for Junior Single Scullers
Cambridge Boat Club to Community Rowing**

Three Divisions: U15, U17, U19

Boys' and Girls' Events within each Division

Sunday, October 13, 2013

Cambridge, Massachusetts USA



Cambridge Boat Club



Riverside Boat Club



Community Rowing, Inc.



Union Boat Club

Welcome All

On behalf of the four host clubs, Cambridge Boat Club, Community Rowing, Riverside Boat Club and Union Boat Club, I extend a hearty welcome to all the competitors, their families and friends to the 1st annual Head of the Quinobequin, one of the Native American names for the Charles River.

This race is a unique opportunity for single scullers 12 to 18 years old to race head style up the windy upper reaches of the Charles River from CBC to CRI.

The concept of the race is built on the success of the KinderSkiff which precedes the adult SilverSkiff and is held every year in November on the Po River in Turin, Italy. There, 300 to 400 young scullers mass below the host club, Cerea, and race 2000 meters up stream to a stake turn and then back to the Club.

Impressed by the participation of so many and convinced that sculling skills and experience are the key to enjoyable and successful rowing, the four hosting clubs decided to replicate the experience here on the Charles.

So welcome again. Come and enjoy the race, meet new friends and share in fun of a junior regatta on the Quinobequin. From here it's just a small jump to the Head of the Charles.

Best of luck,

Greg Benning

Participation and Registration

Participation/Qualifications

1. Limited to a total of 100 participants;
2. Three divisions each initially capped at 33 participants and each with two events: boys' and girls' each initially capped at 17 participants;
 - a. U19 division for juniors with a birth year of 1995 or 1996 (17 and 18 year olds)
 - b. U17 division for juniors with a birth year of 1997 or 1998 (15 and 16 year olds)
 - c. U15 division for juniors with a birth year of 1999, 2000, or 2001 (12, 13 or 14 year olds)
 - d. No entries allowed outside of a participant's age group (e.g., a U17 athlete may not race in the U19 event)
 - e. Entrants accepted on a first come, first served basis. Wait lists will be maintained and acceptances from the wait list will be announced no later than October 7th.
3. Only limitation is a sculler's confidence in his/her ability to complete a 3,000 meter race.
4. Singles only; sliding seat singles of all types may participate;
5. All participants must have signed a USRowing liability waiver; and confirmed by RegattaCentral
6. It is suggested that all participants carry a Coast Guard-approved PFD

Updated 10/6/2013: Must Read

Onsite Registration

1. Register on Regatta Central: www.regattacentral.com
2. Registration closes on October 6th, 2013 at 11:59 PM
3. Entry fee \$25.00
4. Mandatory onsite check-in at CRI opens at 7:30AM on Sunday the 13th at CRI
 - a. Confirm registration **and waiver**;
 - b. Receive bib with racing/**start order** number;
 - c. Receive launching location and recommended launch time;
 - ✓ Those racing from Charles River clubs will launch from their respective clubs;
 - ✓ Visiting crews will be assigned either to CRI or Riverside Boat Club.
 - d. Recovery logistics:
 - ✓ All visitors will recover at CRI. Home town crews launching from down stream local clubs will not be able to return down stream until the last boat has finished the course—this for obvious safety reasons.
 - ✓ We **STRONGLY** encourage local crews to recover at CRI rather than wait in the upper basin, which could be over 30 minutes for crews starting at the front. For these crews, please bring warm clothing and slings to registration and leave at CRI for post race needs.
 - ✓ Local crews can row back downstream or car top home after Awards and Picnic.

Updated 10/6/2013: Must Read

Regatta Schedule

7:30 – 9:30 AM Registration at CRI.

9:30 AM Mandatory scullers' meeting; open to all.

10:00 AM Those from afar who are launching from Riverside Boat Club should proceed to RBC (see directions below) to rig and prepare to launch in sufficient time to warm up and be ready to race in their assigned start position.

As there is no short term parking at RBC, parents and coaches should return to CRI where, after the race, they can recover their scullers.

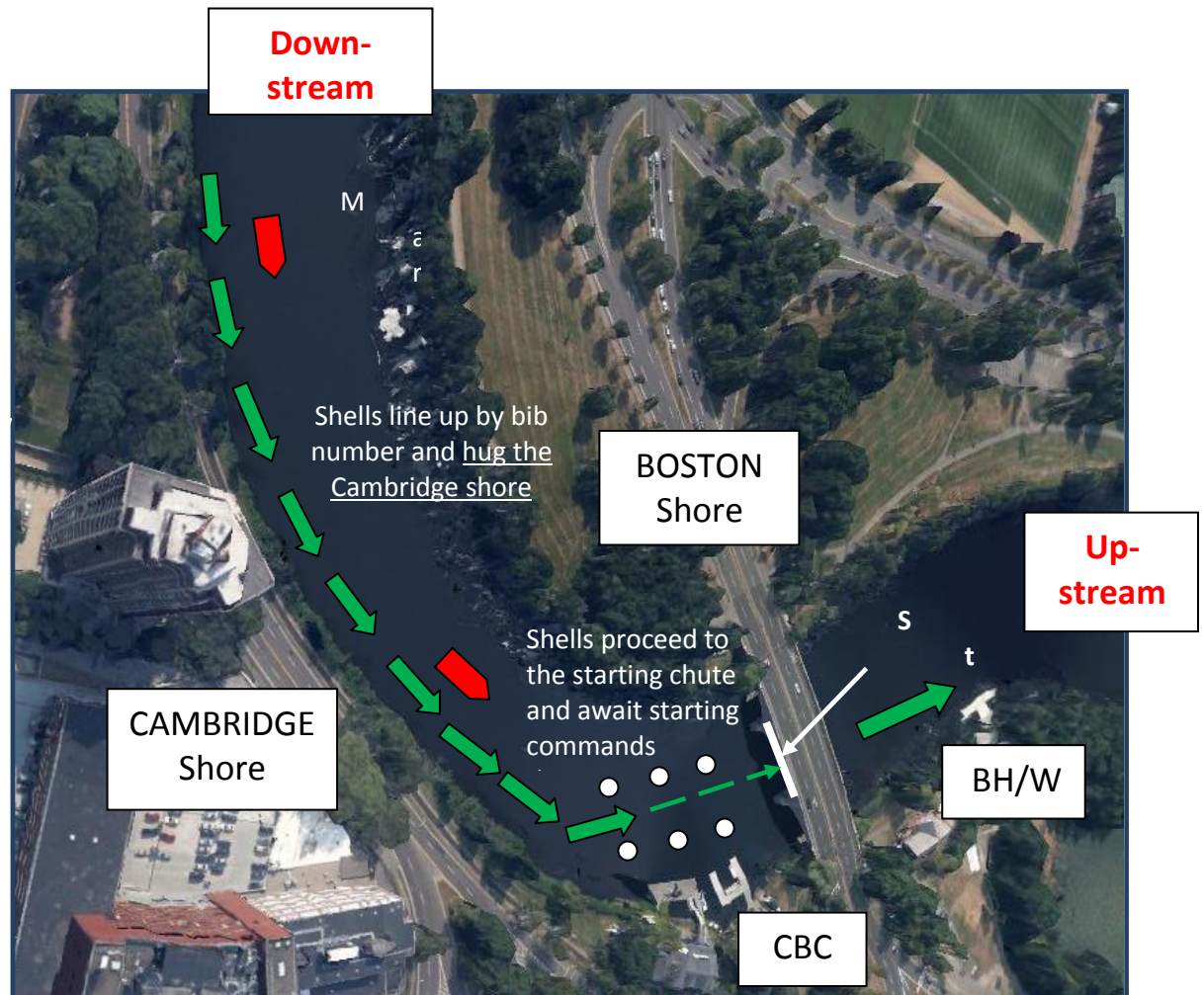
11:45 AM All scullers must be downstream of the starting line which will be the downstream face of the middle arch of the Eliot Bridge at CBC. All boats ordered by bib numbers.

12:00N Race begins.

~1:30 PM Picnic and awards.

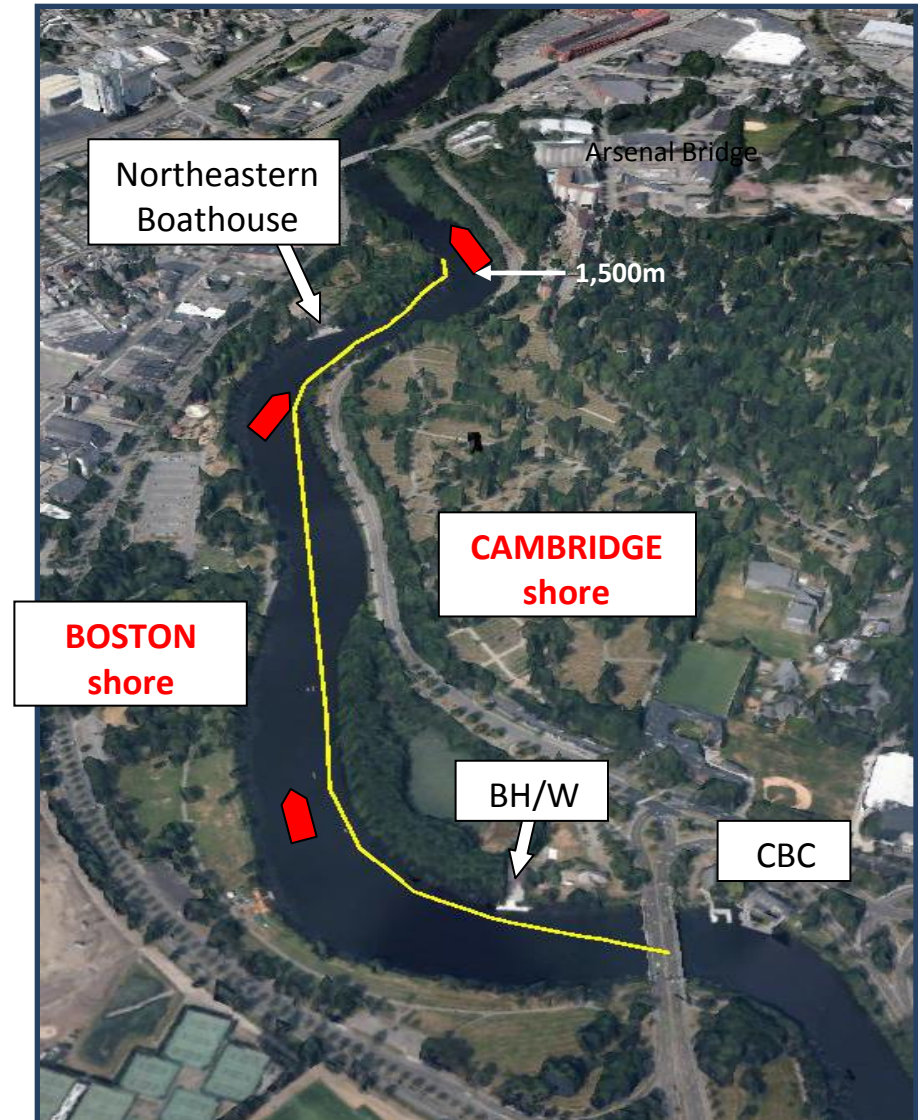
Race Course: Pre-Start/Start Area

- The starting area extends from the starting chute downstream along the Cambridge shore.
- Marshals will order boats for the start and call them into the starting chute where they will STOP.
- A starting marshal will give each single a starting command at ~20 second intervals.
- The starting line is at the downstream face of the middle arch of the Eliot Bridge.



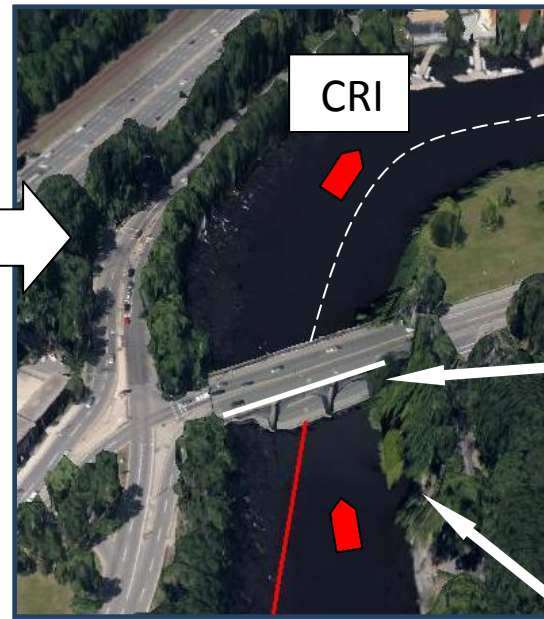
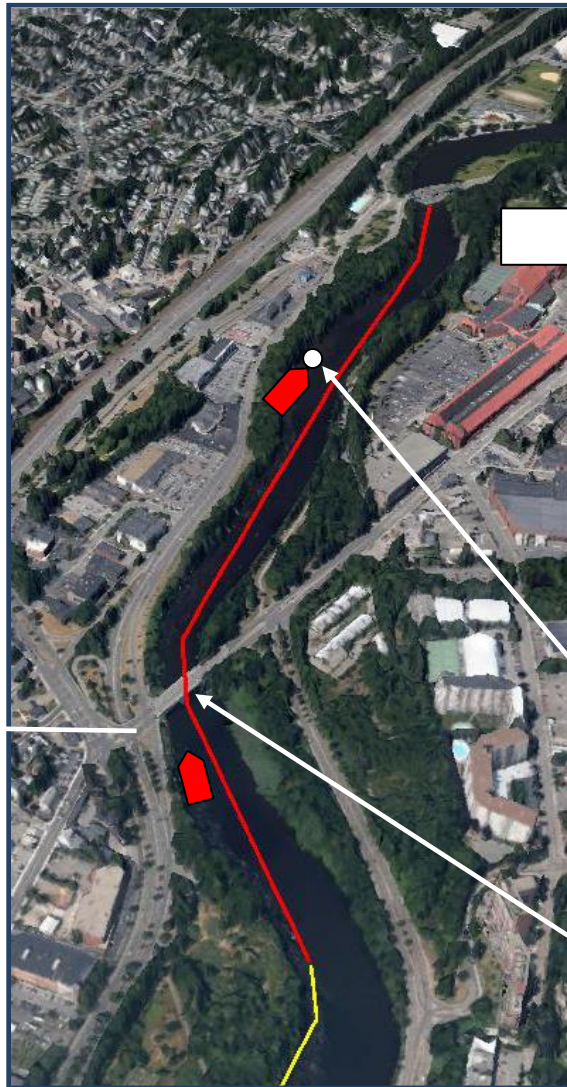
Race Course: First 1500 meters to Northeastern Boathouse

- Scullers must stay on the Cambridge side of the river throughout the race;
- Stay at least a length off the Cambridge bank;
- Avoid Head of the Charles Regatta preparations on the Boston bank;
- Be careful passing the BH/W dock; it juts into the course;
- Safety/marshal launches will be positioned at regular intervals; orders from the launches must be obeyed;
- Spectators are encouraged to follow the race on the Cambridge-side bike paths, which follow the course from start to finish.



Updated 10/6/2013: Must

Race Course: Last 1500 meters to the Finish



- Be careful of the sand bar; stay on the Cambridge side and avoid the buoys.

- Arsenal St. Bridge: Scullers may use either of the two arches.

- The Finish is at the downstream face of **any of the three arches** of the North Beacon Street Bridge.

- Spectators are encouraged to watch the race from the Greenough Blvd. sea wall.

- **Spectators are encouraged to bring bicycles as nearly the entire course can be viewed from the Cambridge side of the river.**

Updated 10/6/2013: Must Read

Race Course: Post Finish and Recovery

1. Upon finishing the race, all competitors must continue past CRI to a turning buoy approximately 500 meters upstream of CRI;
2. Hugging the Boston shore, all competitors will proceed downstream and land at CRI where those from afar can derig and reload their shells on their car or trailer;
3. Visitors launching from Riverside and home town crews will not be allowed to return downstream until the last boat has finished the course - this for obvious safety reasons.

We STRONGLY encourage these crews to recover at CRI rather than wait in the upper basin, which could be over 30 minutes for crews starting at the front. For these crews, please bring warm clothing and slings to registration and leave at CRI for post race needs.

4. As it is our desire to have all competitors present for the awards and picnic, we ask those boating from Charles River clubs not to row downstream until after the awards and picnic.

Racing Rules

1. Overtaking boat has right of way:
 - a. When a faster boat comes within two boat lengths of a slower boat, the slower boat must give way;
 - b. The overtaking boat must give the slower boat the time and opportunity to provide room for the faster boat to pass;
 - c. When giving way the slower boat must move to the outside of a turn or away from the best line to the next turning point.
 - d. It is good a good practice when two boats come together for the scullers to confirm with each other the actions they are about to take.
2. Show respect for your competition
3. Have fun

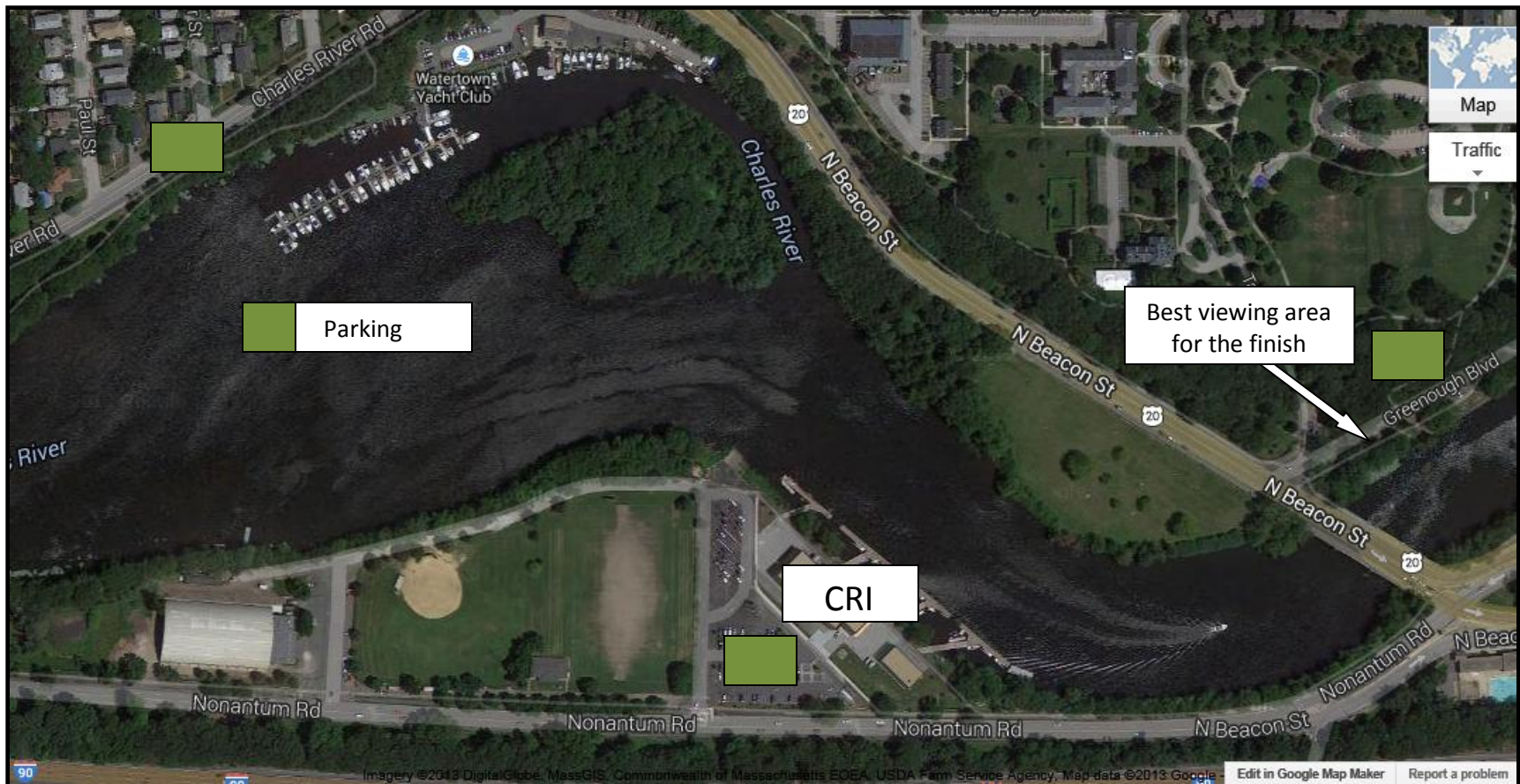
Updated 10/6/2013: Must Read

Safety is Paramount

1. The HOTQ organizing committee is working with the HOCR, the hosting clubs and the Yacht Clubs up and down the river to make them fully aware of the HOTQ's plans and to minimize traffic from 11:30AM to 1:00PM. But we cannot close or prevent others from enjoying the river. Hence, all scullers must be vigilant.
2. There will be as many as nine safety/marshal launches that will escort and when necessary provide direction to individual boats for their safety and those of others. Any directions provided by a marshal must be obeyed without hesitation. All launches will be tied to a radio network for purposes of safety and regatta control.
3. Any action by any competitor that endangers any other competitor(s) (e.g., not giving a competitor room to pass safely through an arch) is grounds for disqualification from this year's regatta.
4. Throughout the race, participants should warn other participants of looming dangers and safety issues. If you see a sculler about to hit an abutment or an obstacle call out.
5. **Scullers will be responsible for having a secure bow ball and heel tie downs.**

Parking, Launching, Recovery

1. The first stop for all competitors will be at CRI to register.
2. At registration each participant will be given a site from which to launch
3. After the mandatory scullers' meeting at 9:30AM, participants may proceed to their designated launching area to unload, rig and prepare for the race;
4. All cars should then return to CRI so that at the end of racing they can retrieve their sculler and his/her shell.



Updated 10/6/2013: Must Read

Directions from CRI to RBC

1. Turn left out of the CRI driveway onto Nonatum Rd. (which is an extension of Storrow Drive);
2. Pass through two sets of lights, keeping the river on your left;
3. Pass the Days Inn, Starbucks and Martinetti Liquors which will be on your right;
4. Bear left and proceed through the underpass onto Storrow Drive;
5. Stay on Storrow and keep the river on your left as you follow it downstream;
6. Pass Newell Boathouse and proceed through the underpass; the Business School will now be on your right;
7. Pass under the foot bridge that connects HBS to Weeks Bridge; get into the right lane
8. Exit Storrow drive to the right shortly after the foot bridge;
9. Go through the first set of lights and proceed to the second; get into the left or middle lane;
10. Turn left and proceed over the River Street bridge; get into the right hand lane;
11. Turn right onto Memorial Drive; RBC will be on your right.

Picnic and Awards

Picnic

After all scullers have finished, a picnic will be served at CRI

Awards

BOYS			
	U15	U17	U19
Gold			
Silver			
Bronze			

GIRLS			
	U15	U17	U19
Gold			
Silver			
Bronze			

HOTQ T-shirts for all scullers