

## 2018 Deep Cove Classic – Regatta Information Package

On Saturday, October 1 Deep Cove Rowing Club will be hosting the Deep Cove Classic. This simple, yet challenging 5km course is nestled in the middle of Canada’s southernmost fjords. With a start line right in front of the DCRC boathouse and a finish line in Panorama Park, The Classic is very spectator friendly.

### **2018 Online Registration**

We have teamed up with Regatta Central and Peloton Technologies in order to provide a more efficient way for clubs to submit their entries. Simply go to [www.regattacentral.com](http://www.regattacentral.com).

### Rosters

We will begin accepting entries Monday, August 20 at 11:59am. You will not need to specify your boating order until entries close Wednesday, September 26. All participants will need to hold valid membership with either Rowing Canada Aviron or US Rowing Association.

There will be a number of age specific categories – namely Junior, High School, and Masters. You will need to include a valid birthdate to secure an entry in these events.

- **Junior and High School** – only open to those turning 18 this calendar year and younger.
- **Masters** – only open to those turning 27 this calendar year and older.

### **Entry Limits**

We will not be capping entries this year, so feel free to enter as many boats as you need. When submitting multiple boats in the same class, please be sure to rank them. In order to ensure a safe turn around Jug Island, the faster boats will start first.

### Entry Fees

Eights (8+)	\$140.00
Quads (4x, 4x+)	\$90.00
Doubles (2x)	\$50.00
Singles (1x)	\$30.00
Rowing BC	\$3.25/per athlete

Entries fees can be paid online through Regatta Central or on race day by either cash or cheque (made out to Deep Cove Rowing Club).

### **Classifications**

- Open: Those athletes 19 years of age and up.
  - Junior: Those athletes who turn 18 this calendar year and younger.
  - High School: Those athletes who qualify as Junior who also attend the same school.
  - Masters: Those athletes who turn 27 this calendar year and older.
  - Mixed: Crews are to be made up of equal number of male and female rowers.
- Bow Numbers

Each boat will be assigned a bow number which will be handed out on race day. This number must be affixed to the bow before heading out on the water. There will also be a number that gets pinned on to the back of bow seat.

**Equipment**

Each boat must comply with equipment rules for RCA Rules of Racing. Each team is responsible for having a bow ball firmly attached to the bow of the racing shell. As well, the shoes in each boat need to be secured to the foot plate with heel ties that conform to the RCA Rules of Racing. If either of these is missing, boats will not be permitted to launch until they comply with regulations.

**Parking – Trailer, Spectator, and Athlete**



**A & B** – Closest to the boathouse. As you come into Deep Cove on Gallant Ave, take your first right. Follow Banbury Rd to the first stop sign. **A** will be your first right, **B** will be your second. On weekends these tend to fill up quickly as they are sometimes used by residents and guest/overnight parking.

**C** – Closest to Panorama Park. As you come around the corner into Deep Cove, turn left at the stop sign. Parking lot will be on your right. This is where we will be directing trailers to park during the regatta. Regatta volunteers will assign parking spots on a first come, first served basis.

If you are car topping, you may find it easier to park along Banbury Road opposite lots **A & B**. You will be further from Panorama Park, but you will have access to the beach in front of the DCRC boat house to launch your shell.

Continuing past lot **A & B**, you will find another parking lot up the hill.

The above parking lots are free with no time limit. If, however, you park on the street, there may be 1 or 2 hour parking. Please make sure you check for signs before leaving your car. You will find plenty of parking along Deep Cove Rd before turning onto Gallant Ave. While this parking is free, there will be about a five minute walk to the regatta site.

### **Coaches / Coxswains Meeting**

There will be a short regatta meeting in Panorama Park starting at 7:15.

### **Race Start Times**

First Flight – 8:30am

- Eights – Men's High School, and Open
- Quads – Women's Junior, Master, and Open
- Doubles – Mixed Master, Men's Master, Junior, and Open
- Singles – Women's Master, Junior, and Open

Second Flight – 10:30am

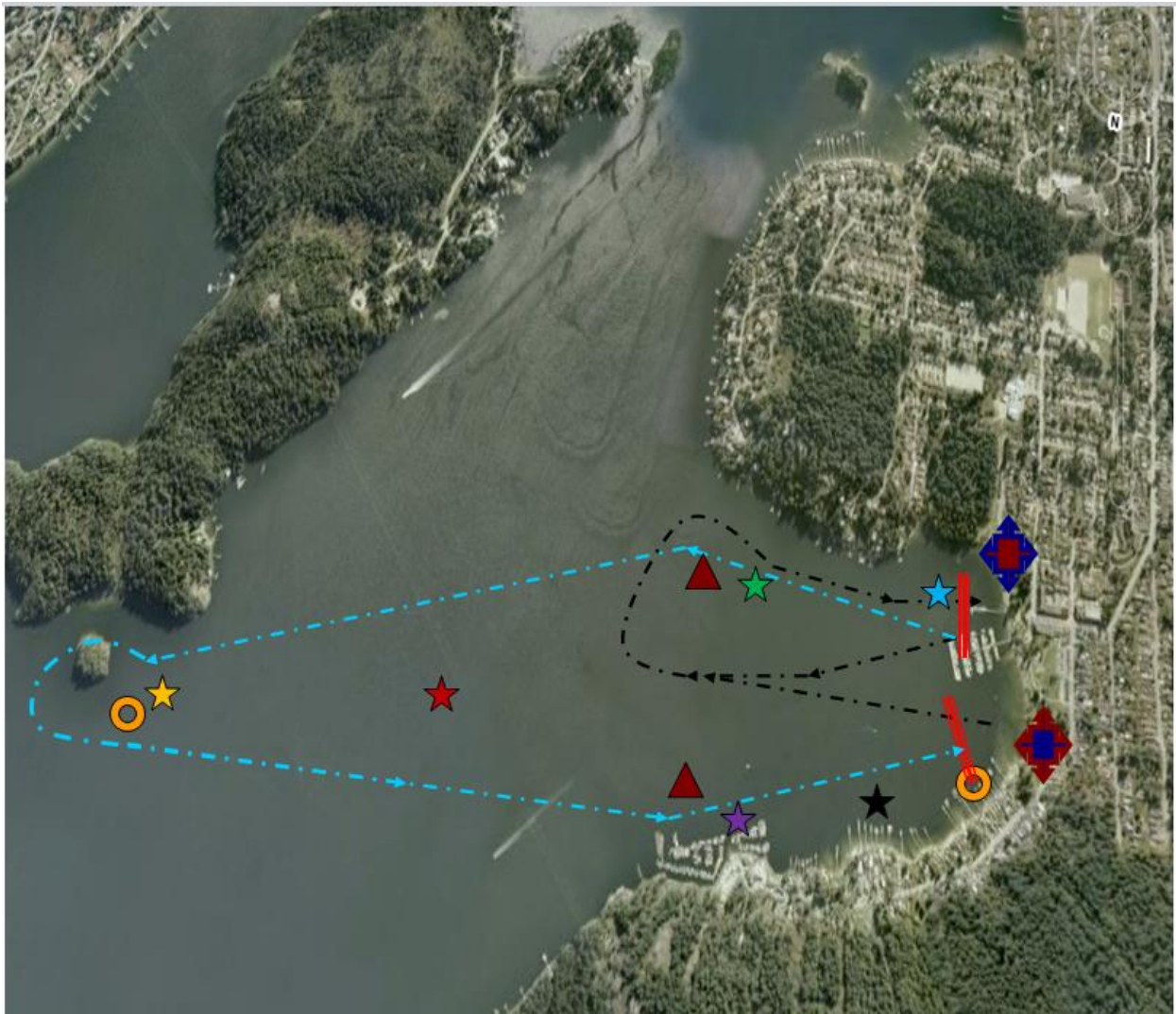
- Eights – Women's High School, and Open
- Quads – Mixed Master, Men's Junior, Master, and Open
- Doubles – Women's Master, Junior, and Open
- Singles – Men's Master, Junior, and Open

## Boat Launching

There will be two sites for launching boats. The main site will be on Panorama Beach. The secondary spot will be in front of the Deep Cove Boathouse. This second site will be reserved for boats coming out of the DCRC boathouse or singles being car topped. Both sites are **WET LAUNCH**. We do not have access to a dock. Crews are asked to wear sandals or other water proof shoes as they walk in to launch their boat. We will have beach volunteers at both sites assisting with the launching and recovery of boats. It is in your best interest to follow their commands. There are a number of large rocks just below the surface that may not be visible depend on the tide.

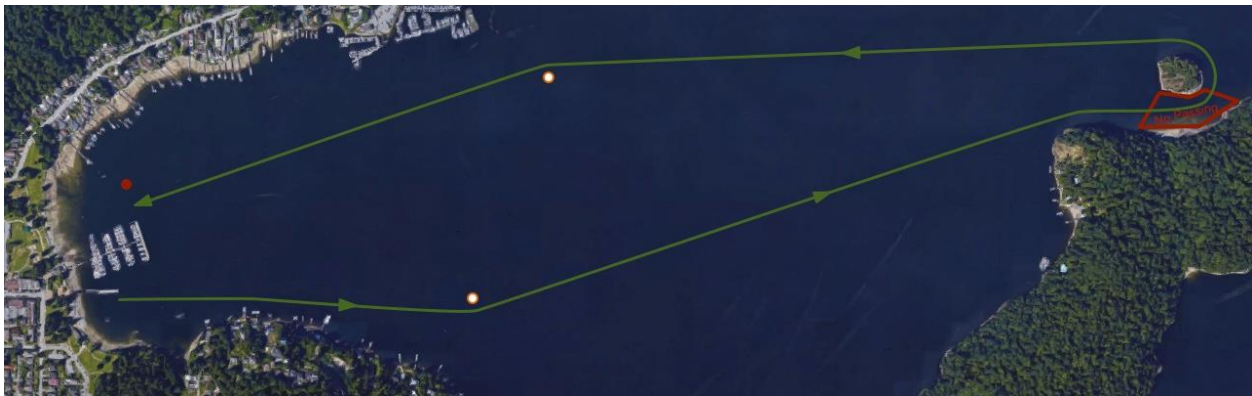
If you have not wet launched before, walk your boat into the water bow first, then turn your shell parallel to the beach. Make sure you are at least mid-shin deep before rolling your boat into the water – this is to make sure your fin/skeg stays attached. Put your oars in beach side first, and then water side. From here, get in one athlete at a time staring from stern. As bow seat gets in, they should push off.

## Race Course



Boats will launch from either beach and follow the black dotted line in a clockwise pattern around the upper five knot can (▲) following shore towards the boathouse. Loop around the beach and line up bows in sequence, pointing towards Jug Island. The start line will be the edge of the Government Dock. Boats will be launched at roughly 30 second intervals. Follow the blue dotted line out of Deep Cove. Crews **MUST** keep the first five knot can on their port side. From here, it is a straight shot to Jug Island. There is a **NO PASSING ZONE** around Jug Island. Go around the island counter clockwise. Rounding the island, Crews **MUST** keep the faded red bouy (○) on their port side. Aim towards Panorama Beach and the finish line. Coming back into Deep Cove, go in between the second five knot can and the barge at the mouth of the marina. The finish line will be marked with buoys at the end of the yacht club docks.

Here is a less cluttered view of the race course. The NO PASSING ZONE is the red shaded area just south of Jug Island.



### **Rules of Racing**

A 30 second penalty will be assessed for the following:

- Failing to go in between the first five knot can and the near shore leaving the Cove.
- Failing to keep to the left of the buoy going around Jug Island.
- Failing to go in between the second five knot can and the dock coming into the Cove.

A 60 second penalty will be assessed for the following:

- Failing to obey the No Passing Zone while going around Jug Island.
- Failing to give way to a faster boat.

When a passing crew closes within one length of open water on the boat being overtaken, it is the responsibility of the slower boat to yield to the line chosen by the passer in the timely manner. The yield should be completed by the time the overtaking boat has closed to within ½ boat length.

### **Weather Contingency Plan**

In the event of winds on race day, the course may change. While the larger boats may handle the chop better, the doubles and singles may not fare so well. If conditions are deemed unsafe for small boats, they may switch to a shorter course within the Cove. This will involve two 'Triangles' using the two five knot cans at the mouth of the Cove.

In the event of fog, the regatta will be put on hold until visibility improved to where Jug Island can be seen from shore. Safety boats must have a clear, unobstructed view up and down the Arm.