



2024 FSRA Matt Abel Speed Fiesta Regatta Meeting

Wednesday, January 17, 2024

8:00 PM

Florida Scholastic Rowing Association



WELCOME - INTRODUCTIONS

Florida Scholastic Rowing Association is excited to welcome everyone to the
2024 FSRA Matt Abel Speed Fiesta
January 20 at Nathan Benderson Park in Sarasota, FL.

Safety and Fairness continues to be the top priority at all FSRA events.

Tonight we have the following people on the call:

Florida Scholastic Rowing Association : Brice Crossley
Nathan Benderson Park Conservancy : Sarah Kupiec
Chief and Deputy Referee : Elaine Roden, Jon Gibbs

Florida Scholastic Rowing Association



AGENDA

1. FSRA

- a. Review of Registration & Venue Items
- b. Alphanumeric Bow Card System
- c. Traffic Patterns

2. Chief Referee

- a. Referee Welcome
- b. USRowing Rules of Rowing
- c. Launching
- d. On the water
- e. Racing
- f. End of Race
- g. Unsportsmanlike Conduct

3. FSRA, LOC, Chief Referee

- a. Safety on Venue (Water & Land)
 - i. Evacuation Plans
 - ii. Medical Aid



Florida Scholastic Rowing Association



REGISTRATION & VENUE ITEMS

- Team Trailer Arrival
 - Friday between 8:00 AM and 6:00 PM; Saturday 6:00 AM – 8:00 AM
 - Those planning to arrive outside the above time frame must notify Sarah Kupiec Hartz (Please Text 941-224-9395) for alternate arrival time coordination
 - **NOTE:** Trailers will remain in place until the last race is completed. This is a safety issue.
- Regatta HQ
 - Tower 3rd floor
 - Please report scratches to regatta HQ at least 1 hour prior to race time
- Practice
 - Friday 1:00 PM – 6:00 PM
 - Launch docks open when marshals are in place and close at 5:15 PM Friday
 - All boats off the water by 6:00 PM Friday
 - Teams violating practice time box will be assessed a penalty (1st warning to all entries)

Florida Scholastic Rowing Association



REGISTRATION & VENUE ITEMS

- Tents
 - No tents or beach umbrellas on the beach
 - Teams are limited to 2 – 10x10 tents; larger tents required pre-event rental
 - No 10x20 team installed tents allowed
- Parking
 - Each team will receive one parking pass to access regatta island for Saturday
 - Vehicle parking will be \$10 per day: Saturday only
 - There will be **NO VEHICLE ACCESS** to the team tent area once launching starts Saturday until racing is finished; bring carts to transport items
 - Tow vehicles may park in front of their boat trailers – **MUST** be parked by 7 AM and remain in place until 1 hour after last race has completed
- Awards
 - No awards dock; go to the awards table on the 3rd floor of the tower
 - Medals for 1st place of each flight available after race results marked official

Florida Scholastic Rowing Association



REGISTRATION & VENUE ITEMS

- Volunteers
 - Key to successful event!
 - Time slots include check-in time and time to get into position
 - VERY IMPORTANT: volunteers show up no later than the listed start time
 - We need everyone to work together to keep the regatta on schedule
 - Review your team's obligations and double check they are ready to go
 - Teams have backups just in case – lets keep things running smoothly
- Lost and Found – Regatta HQ (tower 3rd floor)
- NO PETS allowed in the tower. In the park pets must be on a 6-foot fixed length leash. No adjustable flexi leashes.

Florida Scholastic Rowing Association



ALPHA-NUMERIC BOW CARD SYSTEM

- Control Commission will issue and collect alphanumeric bow cards as boats launch and recover at the docks
- Fee for not returning a bow card is \$10
- Crews need to remember their alpha number
- These are key to marshalling and staging plan
- Keeps the schedule running smoothly



Florida Scholastic Rowing Association



ALPHA-NUMERIC BOW CARD SYSTEM

- Marshals/Referees will call races by the alpha letter **approximately 15 minutes prior to race start time** to cross pass the wave attenuator from warmup side to race side
- A corresponding Letter Card will be displayed
- Crews are to move to their race lane and line up
- **Please allow enough space behind your boat to allow others to move to their lanes**
- Once all boats for that race are lined up, an official will direct them to move forward
- **LATE BOATS**: for boats showing up late, the marshal will determine if it is possible for the boat to join their group and if they should be allowed cross over to the racecourse

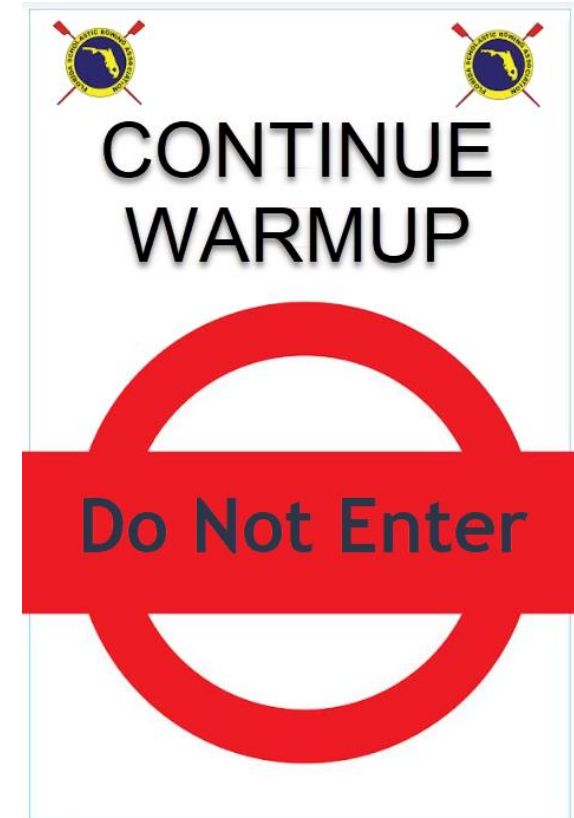


Florida Scholastic Rowing Association



ALPHA-NUMERIC BOW CARD SYSTEM

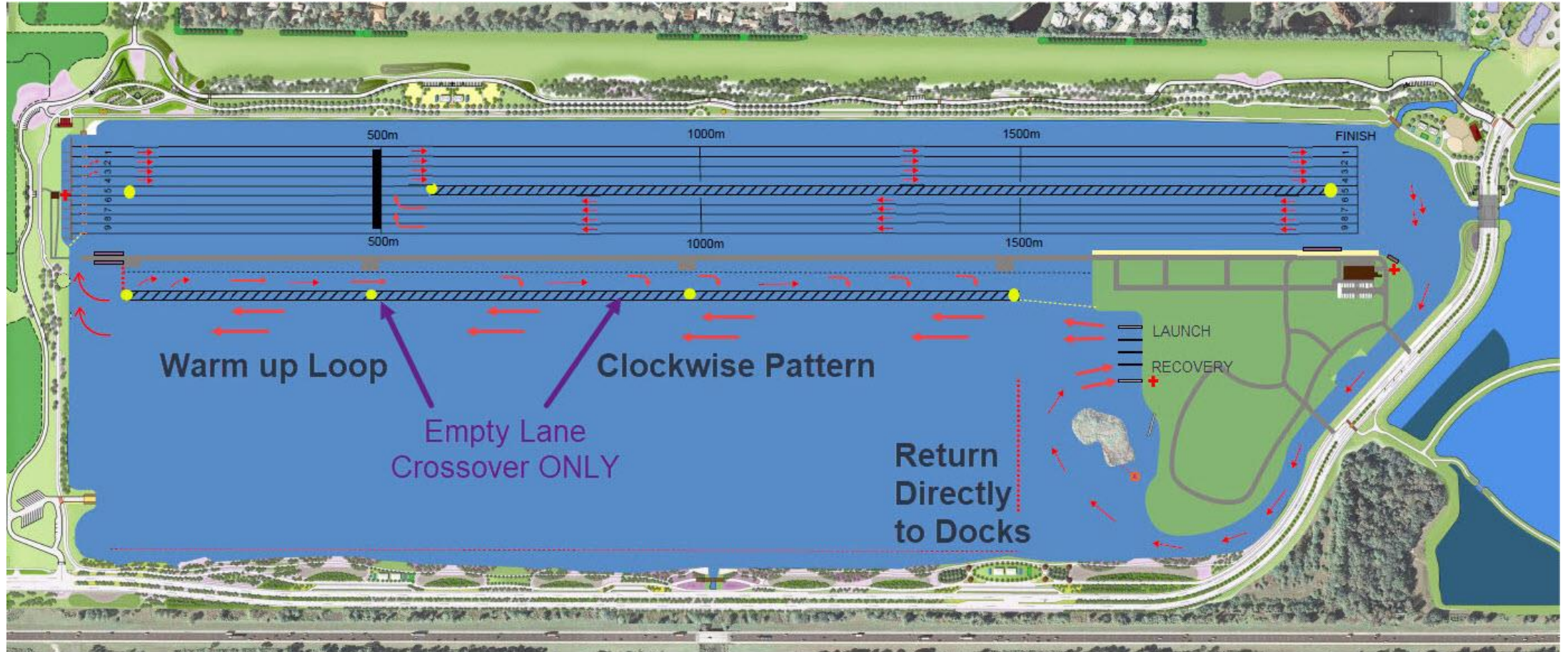
- NOTE: Before officials start calling races by the alpha letter, the racecourse side will be closed
- A sign will be posted at the wave attenuator access point



Florida Scholastic Rowing Association



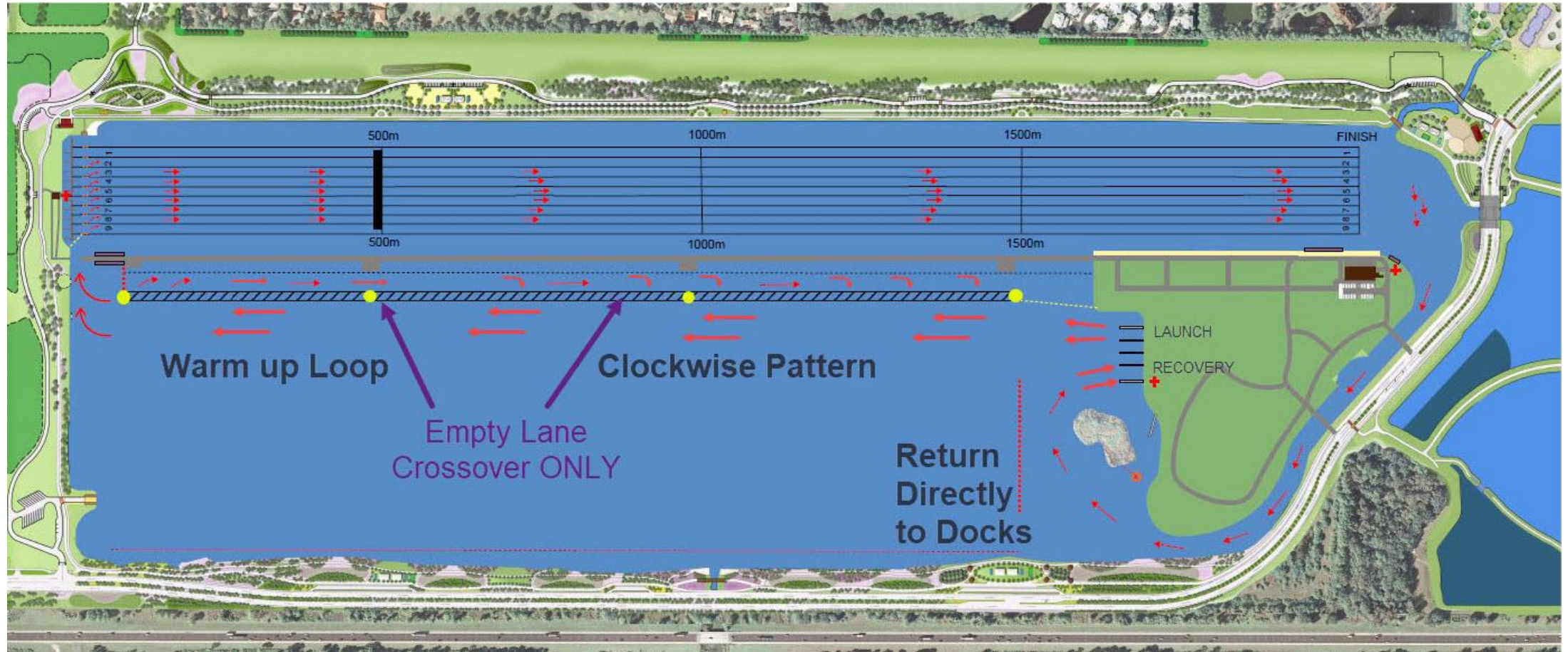
PRACTICE TRAFFIC PATTERN



Florida Scholastic Rowing Association



RACE DAY TRAFFIC PATTERN



Florida Scholastic Rowing Association



WEATHER

- The Regatta Committee is watching weather and will provide a Remind text notification if a new schedule is posted.
- With wind in the forecast, it is VERY important crews understand how to 'scull the bow' around while remaining locked on the stake boat.



- Bow pass the oar to 2 or 2 pass the oar to 3.



- Reaching over the side, take short strokes

Florida Scholastic Rowing Association



Referee Welcome

- The Referees are here for everyone's safety and fairness
- This is your regatta
- If you have questions, ask us
- We are here for you!

Florida Scholastic Rowing Association



USRowing Rules of Rowing

- It is your responsibility to know and understand the Rules of Rowing
 - If you don't understand something, ask us
- Equipment
 - You have certified that your equipment meets the rules - heel ties 3" and bow ball is firmly affixed
 - Do checks before heading to the docks
- Broken Equipment - alert the nearest referee and if possible, we will work with you

Florida Scholastic Rowing Association



Launching

- Uniforms
 - All athletes must have their torso covered sling to sling: from when the picking up the boat going to control commission to putting down the boat after rowing
- Control Commission
 - Before you approach the docks - IT IS YOUR RESPONSIBILITY that the boat is compliant with all safety rules
 - Pre-check heel ties, bow ball, and rigging
 - Racing issues with these are not breakage – it is for your safety
 - Know your race and lane number so you recognize when you are called
 - **HOT SEATING – Let CC know; recover on center dock to switch crew**
- Launch Time
 - Recommend crews launch 40 to 45 minutes prior to scheduled race time

Florida Scholastic Rowing Association



Launching

- Hot Seating
 - The initial crew involved with a hot seat need to inform CC
 - The boat coming in needs to recover on center dock to switch crew
 - Outgoing crew needs to check in with Control Commission as if launching
 - CC Official will verify bow card properly switched out on the dock
- On the Docks
 - Keep all walkways and docks clear of oars, shoes, clothing, etc.
 - Be quick while on the dock for both launch and recovery
 - Minimal number of people to launch your boat
 - Take boat to slings for any repairs/adjustments

Florida Scholastic Rowing Association



On the water

- In general, if an official gives you an instruction,
 - Please acknowledge with a hand so we know you heard us
 - Follow instruction as quickly as safely possible
- Warm Up
 - Follow the Traffic Pattern – **clockwise pattern** with empty lane between north bound and south bound lanes
 - Only use middle empty lane for switching between north and south bound lanes after 500-meter mark (start line)
 - Merge with traffic only when you have room to safely do so

Florida Scholastic Rowing Association



Racing

Sprint Starts – Part 1

- The starter will tell you when you may enter the racecourse
- If you must turn in your lane to attach to starting dock, **do it close to the dock**

- Starter will count down to 2 minutes
- Locked on by 2 minutes prior to your race;
 - failure to be locked on will result in a warning

- The race may start at any time after the 2-minute notice

- If you leave the start, you accept the start

- Breakage zone is 100 meters or 20 seconds

Florida Scholastic Rowing Association



Racing

Sprint Starts – Part 2

- Start Using Flags
 - Crews will be announced in a steady cadence, then “Attention” and raising the red start flag, then “Go” and dropping the flag
- Quick start – will be announced by the Starter;
 - No announcing of the crew names during the Start sequence
- Hands will not be recognized during the Start sequence
- If the Starter is interrupted, crews will hear “As you were” and the start sequence will begin again

Florida Scholastic Rowing Association



Racing

During the Race

- A referee(s) will follow each race and use the white flag as necessary to direct your shell. You and you alone are responsible for your steering.
- If appropriate, the following referee will STOP the race using the red flag and an audible sound.
- It is prohibited to give any instructions, advise or directions to Rowers that are racing with any electric, electronic, or other technical devices. The presumed penalty for communication by electronic means is exclusion.

Florida Scholastic Rowing Association



End of Race

If you feel your opportunity to win, place or advance was negatively impacted, raise your hand at the finish line and get the following referee's attention

- Referee will listen to your objection
- State what happened, where it happened and what remedy you would like to restore fairness
- Referee may need to speak to other crews so do not leave the finish area
- Referee will render a decision on the water to your objection

- If you agree

- If you disagree or if you are affected by a referee's decision and you disagree ...
 - 1 hour written protest and \$50 cash to the Chief Referee or Chief Judge at the Finish
 - You can not file a protest on land if you have not raised an objection on the water
 - We will review your protest and advise you of the next steps

Florida Scholastic Rowing Association



UNSPORTSMANLIKE CONDUCT

- Unsportsmanlike conduct includes, but is not limited to, failure to heed the instructions of race officials, use of obscene language or gestures, delaying a race without just cause, intentional or flagrant disregard of principles of safety and fairness, or abusive behavior toward any official, team member, or spectator.
- A crew that engages in unsportsmanlike conduct may be assessed a penalty by a race official.
- Any team member, including a competitor, who engages in unsportsmanlike conduct, on or off of the water, at any time during the regatta, may have his or her further participation at the regatta curtailed or prohibited by a race official.
- A crew may be subject to an “unsportsmanlike conduct” penalty if a person affiliated with their organization, including spectators and parents, engages in the use of an unapproved drone at the regatta venue. An “unsportsmanlike conduct” penalty issued for the use of a drone will carry a presumed penalty of “Disqualification”.
- If you or one of your athletes witnesses unsportsmanlike conduct of any kind, please refer to the USRowing Code of Conduct on how to escalate the matter.

Florida Scholastic Rowing Association



SAFETY ON VENUE - EVACUATION PLAN

The Chief Referee initiates “suspend”, “cancel”, “resume” rowing plans.

- On-Water:
 - The Starter directs evacuation of the start area including crews in line behind the start. The Start Marshal and Referees closest to the start are designated to evacuate Starters, Judge at Start/Aligner and stake boat holders to land.
 - The Referees along the racecourse direct the evacuation of crews on the course expeditiously and move to beach landing sites to assist crews and document recovered crews.
 - Warm-up and Pre-Start Marshals direct and escort crews in the warm-up area back to the docks.
 - Referees closest to the finish proceed to the launch and recovery docks. Use all docks for evacuation. Coordinate boats going into the docks.
- Control Commission stops launching, directs the dock master in recovering boats expeditiously and safely and documents returning crews.

Florida Scholastic Rowing Association



SAFETY ON VENUE - MEDICAL AID

- Medical will be located at the finish line and the launch docks.
- If medical is needed on the water, flag down the nearest official for assistance.

Florida Scholastic Rowing Association



Get Ready to race!

Good luck and be safe.



Florida Scholastic Rowing Association