



114th Annual NWIRA Championship Regatta **Lake Elmo, City of Lake Elmo, Minnesota, United States** **Friday & Saturday, August 11 & 12, 2017**

The coaches meeting begins at 6:00 p.m. CT on Thursday, August 10, 2017
at the South Pavilion Picnic Shelter Area

NWIRA Registration Process

Entries are due by **Friday, August 4, 2017**.

NWIRA association clubs and guest clubs can submit their entries at the Regatta Central website - www.regattacentral.com starting on Monday, July 10, 2017. The online registration will close at 12:00 a.m. Midnight (Central Time) on **Friday, August 4, 2017**. Entries will not be visible in Regatta Central until after close of registration.

Clubs that are not member of the NWIRA association may participate in this regatta as a guest club.

From **Friday, August 4, 2017** until **Monday, August 7, 2017** at **5:00 p.m. Central Time**, clubs can submit name changes and/or scratches to the NWIRA Secretary, stock041@tc.umn.edu at no cost. Do not submit changes and/or scratches through Regatta Central during this period. The Secretary will not accept any new entries after the August 4 deadline.

The NWIRA Secretary will publish the event schedule and heat draws by **Wednesday, August 9, 2017**.

Clubs will need the following information to prepare their club 2017 NWIRA entries in Regatta Central:

- Competitor list which includes first and last name of rowers and coxswains
- Competitors' birthdates
- Crew entries, including crew names, coxswain, if needed, event #, event name, boat ID (i.e. A, B, C).

Clubs are not required to enter alternates for each boat entry.

All US competitors should be either an individual member of USRowing or a member of an USRowing-member institution. All Canadian competitors should be a member of Rowing Canada Aviron (RCA).

Please contact the NWIRA Secretary, Charlie Stockwell, (stock041@umn.edu / 651-602-0758) with questions about the NWIRA registration process.

NWIRA Fees Schedule

Exchange rate (1.00 USD = 1.33 CAD)

Based on 6 Month Weighted Average from January 2017 thru June 2017 (Source: Bank of Canada)

	US Dollars	Canadian Dollars
Entry Fees		
Singles	\$20	\$27
Doubles / Pairs	\$40	\$53
Fours / Quads	\$60	\$80
Eights	\$80	\$106
Scratch Fees *		
Singles	\$20	\$27
Doubles / Pairs	\$40	\$53
Fours / Quads	\$60	\$80
Eights	\$80	\$106
NWIRA Club Membership Dues (Required)	\$100 per club	\$133 per club
Guest Club Fees (Required)	\$50 per club	\$67 per club
Regatta Fees (Required) **	\$25 per person	\$33 per person

* Any scratch fees NOT paid at the regatta will be subject to an administration fee (\$50 USD \$67 CAD).

** All rowers, including coxswains, competing in the championship regatta are required to pay the regatta fee (\$25 UD / \$33 CAD) in addition to boat entry fees and guest clubs fees or club membership dues. This regatta fee covers regatta expenses (e.g. banquet, insurance, entertainment, and equipment rental).

Non-rowers (parents, coaches, family members and friends) that wish to attend the awards banquet may do so at (\$25 USD / \$33 CAD) per person. Clubs may enter the number of non-rowers attending the award banquet in the Registration Form in Regatta Central (see image below). After submitting the number in Regatta Central, clubs are responsible for the number of people expected to attend. There will be no refund for those who are unable to attend the banquet.

Additional Information and Options

Regatta Fee: \$25 for Rowers & Coxswains and \$25 for Non-Rowers planning to attend the Awards Banquet

* Number of Rowers & Coxswains in your entries that you will be paying for @ \$25/athlete Choose... ▼

Number of Non-Rowers planning to attend the Awards Banquet @ \$25/person Choose... ▼

Participating clubs are to turn in one payment at the coaches meeting on Thursday, August 10, 2016, at 6:00 p.m. (Central Time) at the regatta site for the following:

- Entry Fees. The Secretary will calculate total entry fees based on entries and changes submitted as of 5:00 p.m. (Central Time) Monday, August 7, 2017.
- Scratch Fees, if applicable.
- NWIRA Club Membership Dues, if applicable.
- Guest Club Fees, if applicable.
- Regatta Fees for individuals (rowers and non-rowers) attending the awards banquet.

If you are not paying by credit card at Regatta Central, please make your check payable to North Western International Rowing Association (NWIRA) in the currency of the country of your club. **To avoid processing fees and keep entry fees affordable, we strongly encourage clubs to make payments by check.**

Club with outstanding balance on the first day of the regatta will not be allowed to compete until the balance is paid in full or other arrangement has been made.

Submit list of all coxswains competing in the regatta

Please submit a list (first and last name, date of birth, and club) of all coxswains that will be competing in the regatta to the NWIRA Secretary, Charlie Stockwell, at stock041@umn.edu by **Friday, August 4, 2017**. Be sure to include alternates. Officials need this information for weigh-in purposes.

Entry Rules

- Double and Pair events limit to four entries per club

Each club may submit up to four entries for each double and pair event. This includes the following events:

02. Junior Women 2-	26. U23 Men 2x	42. Junior B Women 2x
07. Open Women 2-	32. Junior Men 2x	45. Light Weight Women 2x
11. Junior Men 2-	33. Junior B Men 2x	46. Open Women 2x
15. Master Men 2-	36. Master Women 2x	51. Open Men 2x
16. Master Women 2-	40. Master Men 2x	52. Light Weight Men 2x
20. Open Men 2-	41. Junior Women 2x	53. U23 Women 2x

The purpose of this rule to reduce the number of heats needed to race these events.

- An event with one or more entries from only one club after close of registration

If an event has one or more entries from only one club after close of registration, the event will stay on the schedule. At the coaches' meeting, clubs will have opportunity to submit entries to the event. Clubs submitting entries will pay normal entry fees for that event.

If the event does not receive entries from any other clubs at the coaches' meeting, NWIRA will cancel that event and refund the entry fees to the club with the entries.

- To be eligible to row in the Championship regatta, a competitor must register as a competitive member of the club for which he/she will compete. A competitor cannot row as unaffiliated.

- Individuals are eligible to row only for one club during the Championship regatta and that must be the Club that the rower competed for after June 15th of the current year.
- Composite crews are not allowed in this Championship Regatta.

Rower Classifications

Junior B	An individual who will be 16 or under on December 31, 2017.
Junior	An individual who in the current calendar year does not attain the age of 19, or who is and has been continuously enrolled in secondary school as a full time student seeking a diploma. An individual ceases to be a Junior after December 31 of the year of his or her 18th birthday, or of the year in which he or she completes the 12th grade of secondary school, having been a full time student, whichever is later.
U23	An individual who will be 22 or under on December 31, 2017.
Open	All individuals are eligible for Open events. Individuals rowing in Open events cannot row in Master's events.
Masters	An individual who has attained or will attain the age of 27 or older on December 31, 2017. An individual age is determined as of December 31, 2017. Crew's average age is rounded down to the nearest whole number. Masters will be age handicapped based on the United States Rowing Association's Handicap System. All masters entering master's events can only row Master events, Dashes, and Open 8+ events.
Lt. Weight Women	No crewmember shall be over 130 lbs – 59.0 kg.
Lt. Weight Men	No crewmember shall be over 159.8 lbs – 72.5 kg.

A crew competing in a mixed event must be 50% male and 50% female, not including the coxswain. A female rower shall not compete in events for men, and a male rower shall not compete in events for women.

With the exception of the Junior 8+ events, all Master, Junior B, Junior, U23, and Open rowers may row in any 8+ events.

NWIRA Association Clubs

NWIRA is an association of rowing clubs in the United States and Canada. Current association club members are:

- Duluth Rowing Club (DULT), Duluth, Minnesota, USA
- Kenora Rowing Club (KENR), Kenora, Ontario, Canada
- Long Lake Rowing Crew (LLRC), Long Lake, Minnesota, USA
- Minneapolis Rowing Club (MPLS), Minneapolis, Minnesota, USA
- Minnesota Boat Club (STPL), St Paul, Minnesota, USA
- Pinawa Rowing and Sailing Club (PINW), Pinawa, Manitoba, Canada
- Regina Rowing Club (RGNA), Regina, Saskatchewan, Canada

- Rochester Rowing Club (ROCH), Rochester, Minnesota, USA
- Saskatoon Rowing Club (SASK), Saskatoon, Saskatchewan, Canada
- Thunder Bay Rowing Club (TBAY), Thunder Bay, Ontario, Canada
- Winnipeg Rowing Club (WNPNG), Winnipeg, Manitoba, Canada

NWIRA Volunteer Duty

Each NWIRA association club needs to provide two volunteers per day to work at the regatta. Several people can divide this duty among themselves - as long as there are two volunteers from each club at all times for the duration of the event. Guest clubs are exempt from this duty.

Please provide volunteer contact information to Claudia Daml at claudiadaml@q.com, and Kim Landy at klandy77@gmail.com. Contact information should include volunteer name, date and time they are available, their email address and phone number.

Chief Referee

The chief referee for the 2017 NWIRA Championship Regatta is Lloyd McDonald, United States Rowing Association (USRA). USRA Rules of Rowing will govern this regatta.

Weather Contingency Plan

To ensure the safety of the athletes, officials, regatta personnel and volunteers, officials and LOC may shorten, reschedule, or cancel races due to deteriorating weather conditions or other unforeseen events. When such situations occur, the Chief Referee, NWIRA Executive Committee, and LOC Regatta Chair will jointly assess the situation, outline alternations to the race schedule or competition, and inform the participating clubs of the alternations. Such announcements will be made over the on-site public address system and, if needed, ad-hoc meeting with coaches and club representatives.

Depending on the situation during the regatta, such alternations may include one or more of the following:

- Shorten the race from 2000 meters to 1000 meters or shorter if the weather conditions deteriorates enough to cause choppy waters or the regatta is seriously behind schedule.
- Postpone or reschedule races to different time to allow thunderstorm, lightning or other severe weather conditions to pass through.
- Shorten or cancel finals if severe weather condition occurs in the afternoon. All finishing times from heats for an event determines finish order if finals are canceled.
- Rearrange races so that the big boat events (4-, 4+, and 8+) are conducted first following a passing thunderstorm. Conduct the small boat events (1x, 2x, 2-) as conditions improved.
- Cancel one day of competition all together if severe weather condition lingers throughout the day. Run the second day of competition as scheduled if condition improves.

Officials, NWIRA Executive and LOC Regatta Chair may also consider other alternations not listed. Regardless of alternations implemented, the safety of the athletes, officials, regatta personnel, and volunteers is top priority under any severe weather situation or unforeseen events.

Club are responsible for staying updated on announced schedule and/or competition changes.

There will be no refund of entry fees, scratch fees, regatta fees, and association dues for canceled races due to deteriorating weather conditions or other unforeseen events.

Course and Event Distance

The course is a 2000 meter, 7-lane, fully buoyed course with stakeboats. Crews must be able to back into a stakeboat. All races will start from the starting line at the south end of the lake. See course map.

Event distances are as follow:

Event	Distance
Dashes	400 meters
Master	1000 meters
Junior & Open	2000 meters

Waiver

Waiver is required at this championship regatta. US rower must submit their waiver on line thru Regatta Central or use attached waiver form. US rowers can turn in their completed waivers at the coaches meeting.

US host club will compile of a list of all Canadian rowers participating in this regatta to the US Rowing Association for coordination with Rowing Canada Aviron.

Maximum Number of Events

Rowers may compete up to six events that he or she is eligible to row. Dashes are not included in this limit. If a rower violates this limit, the rower shall forfeit all medals won. In addition, the boat in violation will forfeit its medals, and any points earned by the offending crew.

Lane Assignments

Lane assignment for heats and final only are randomly drawn. Lane assignment for rowers advancing from heats are seeded base on place and time and assign from middle lanes out.

NWIRA Progression System

# of Entries	Heats	Advance
1 – 7	0	Final Only
8 – 14	2	Top 3 finishers in each heat advance to Final
15 – 21	3	Top 2 finishers in each heat advance to Final
22 – 28	4	Top finisher in each heat and next 2 fastest finishers by time overall advance to Final
29 – 35	5	Top finisher in each heat and next fastest finisher by time overall advance to Final

Coxswains

- Coxswains must not weigh less than 120 lbs – 54.4 kg for men’s boats, 110 lbs – 49.9 kg for women’s boats, and 110 lbs – 49.9 kg for mixed boats. Coxswains must weigh in ONCE for the entire regatta.

- Coxswains who weigh less than the required minimum MUST carry weight. Coxswains are responsible for securing their own weights. Regatta site will have limited materials for weights.

Weigh-Ins

- Weigh-ins shall be open for at least one and one-half hours and will end one-half hour before the first light weight race on the first day of the regatta. Weigh-in on first day of the regatta applies for lightweight events on both day of the regatta, Friday and Saturday.
- Coaches must accompany their crews and coxswains for weigh-ins. Pair and Double teams MUST weigh-in together.
- If a male weighs in more than three pounds or a female weighs in more than two and a half pounds over the maximum weight for lightweights, that individual is disqualify from the lightweight events for the regatta.
- ALL CREWS AND COXSWAINS MUST BE IN CLUB ATTIRE FOR WEIGH-INS, DRESSED AS TO COMPETE IN A RACE – NO EXCEPTIONS! Athletes not dress in racing attire are not to weigh-in. An athlete has only two attempts to make weigh on the first day of the regatta, provided he/she is not over the maximum allowed weight. There will be no “practice weigh-ins”.
- Not making weight results a scratched entry and scratch fee.
- There is no average weight for lightweight crews.

Club Colors

All crews must wear their club colors during races or they will not be allow to start any race.

Bow Balls and Bowmarkers

All crews are required to have a bow ball on their shell. NWIRA will have standard size bow markers available for shells. Each boat must have a proper lane marker clip on the bow.

Heal Ties

All stretcher shoes must have proper length heel-restraining ties in place. Dock master will inspect shells before they are launch.

Full Crew at Starting Line

All boats at the starting line must be fill with appropriate number of rowers, and if required, a coxswain. A crew with a missing rower or coxswain, if required, at the starting line will not be allow to start.

Athlete Substitution

Please use the Athlete Substitution / Change form at the end of this packet if you need to make substitutions for an event during the regatta. Turn in your forms to the clerk as soon as possible.

Scratches

Please use the Scratch form at the end of this packet if you need to make scratches during the regatta. Unless waived by the NWIRA President or Secretary, scratch fees will be assessed to clubs submitting scratches.

Protest

Once an objection is lodged, a crew wishing to be heard before the Jury may fill out a protest form describing the facts that underlie the protest and the relief that the crew seeks to the Chief Umpire or another race official within one hour after it reaches land. The form is available at the Control Commission. Crew submitting a completed protest form shall pay a protest fee (\$100 USD / \$133 CAD) by cash or check.

If the protest is upheld or it is found by the Jury to be substantially justified, the Jury will return the protest fee to the crew. Otherwise, the NWIRA will keep the protest fee.

On-site Concessions and Merchandise Services

Minnesota Boat Club will be providing on-site food service at the regatta site, from 9:00 A.M. to 3:00 P.M. Event t-shirts and memorabilia will also be available for purchases.

Unless authorized by the Minnesota Boat Club, visiting clubs and vendors are not allowed to sell foods, beverages, or merchandises at the regatta site.

Awards

- All first place finishers in all events will receive medals.
- All second and third place finishers in all junior events will receive ribbons.

Aggregate Trophies

Aggregate trophies are awarded to the club scoring the most points for:

- Grand Aggregate NWIRA Championship (Sir Thomas Lipton Cup)
- Men's Division Championship (Con' Riley Trophy)
- Women's Division Championship (Henning Peterson Trophy)
- Junior's Division Championship
- Master's Division Championship
- US / Canada Cup – US Clubs vs. Canadian Clubs
- Efficiency Championship (CAN-AM Shield)

All clubs, including guest clubs are eligible to earn points for the aggregate trophies.

NWIRA Scoring System

Event Types	# of Entries in an event	2000 & 1000 Meter Events						
		Places						
		1st	2nd	3rd	4th	5th	6th	7th

1x	2	10	4					
	3	10	6	0				
	4	10	6	4	0			
	5	10	6	4	2	0		
	6	10	6	4	2	1	0	
	7 or more	10	6	4	2	1	0.5	0

2X/2-/2+	2	15	6					
	3	15	9	0				
	4	15	9	6	0			
	5	15	9	6	3	0		
	6	15	9	6	3	1.5	0	
	7 or more	15	9	6	3	1.5	0.75	0

4X/4-/4+	2	20	8					
	3	20	12	0				
	4	20	12	8	0			
	5	20	12	8	4	0		
	6	20	12	8	4	2	0	
	7 or more	20	12	8	4	2	1	0

8+	2	30	12					
	3	30	18	0				
	4	30	18	12	0			
	5	30	18	12	6	0		
	6	30	18	12	6	3	0	
	7 or more	30	18	12	6	3	1.5	0

# of Entries in an event	Dashes							
	Places							
		1st	2nd	3rd	4th	5th	6th	7th

2	6	2.4						
	3	6	3.6	0				
	4	6	3.6	2.4	0			
	5	6	3.6	2.4	1.2	0		
	6	6	3.6	2.4	1.2	0.6	0	
	7 or more	6	3.6	2.4	1.2	0.6	0.3	0

--	--	--	--	--	--	--	--	--

--	--	--	--	--	--	--	--	--

2	20	8						
	3	20	12	0				
	4	20	12	8	0			
	5	20	12	8	4	0		
	6	20	12	8	4	2	0	
	7 or more	20	12	8	4	2	1	0

2017 NWIRA Championship Regatta - Schedule of Events

Dashes (400 Meters) Master (1000 Meters) Junior & Open (2000 Meters)

Lunch Break is scheduled at around noon on each day

Each event will go through its entire progression on the same day. Heats will take place in the morning and Finals in the afternoon.

Friday – August 11, 2017	Saturday – August 12, 2017
1. Master Men 4x	30. Women 8+
2. Junior Women 2-	31. Master Men 4-
3. Master Women 1x under 50	32. Junior Men 2x
4. Master Women 1x 50 and over	33. Junior B Men 2x
5. Junior Men 4x	Break
6. Junior B Men 4x	34. Light Weight Women 1x
7. Open Women 2-	35. Open Men 4-
8. Light Weight Men 1x	36. Master Women 2x
9. Open Men 1x	37. Junior Women 4+
10. Mixed Master 4x	38. Junior Men 8+
11. Junior Men 2-	39. Open Women 4-
12. Junior Women 8+	40. Master Men 2x
13. Open Women 1x	Break
14. Open Men 4x	41. Junior Women 2x
15. Master Men 2-	42. Junior B Women 2x
Break	43. Men 8+
16. Master Women 2-	44. Master Women 4-
17. Open Women 4x	Break
18. Junior Women 1x	45. Light Weight Women 2x
19. Junior Men 4+	46. Open Women 2x
20. Open Men 2-	47. Junior Men 1x
21. Master Women 4x	(10 min to switch lines)
22. Master Men 1x under 50	48. Dash Men 1x
23. Master Men 1x 50 and over	49. Dash Light Weight Men 1x
Break	50. Dash Women 8+
24. Junior Women 4x	Break
25. Junior B Women 4x	51. Open Men 2x
26. U23 Men 2x*	52. Light Weight Men 2x
(10 min to switch lines)	53. U23 Women 2x*
27. Dash Women 1x	
28. Dash Light Weight Women 1x	
29. Dash Men 8+	

* Local Organizing Committee Special Event

NWIRA Banquet and Award Ceremony

7:30 PM Banquet

8:30 PM Award Ceremony

The NWIRA Banquet and Award Ceremony will be held at the South Pavilion Picnic Area. See regatta site map for location of the picnic area.

Parking is available at the Pavillion

Lake Elmo Inn Event Center is providing the catering for this event, The menu is as follow:

Grill Package

Chicken Breast, Hamburger, and Bratwurst
Condiments (Tomatoes, Lettuce, Cheese)

Corn on the Cob

Two Salads

Fresh Fruit Tray

Iced Tea and Lemonade

Dessert

Hotel Accommodations near Lake Elmo

Best Western

970 Helena Ave. N.
Oakdale, MN 55128
Phone: (651) 578-8466

Hilton Garden Inn

420 Inwood Avenue North
Oakdale, MN 55128
Phones: 1-800-741-5072 / 651-735-4100

Holiday Inn Express

9840 Norma Lane
Woodbury, MN 55125
Phones: 651-702-0200

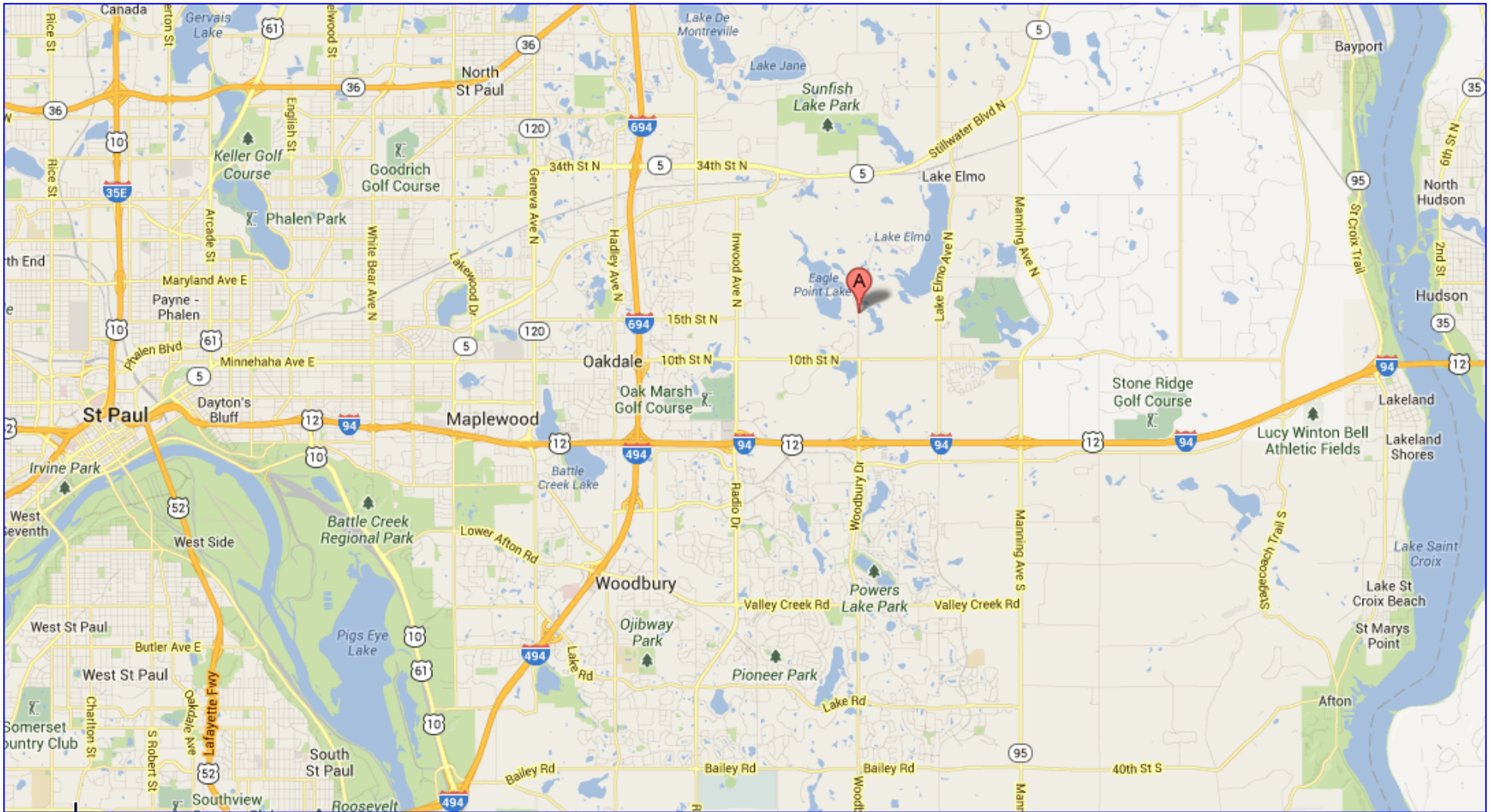
Camping – Lake Elmo Park Reserve

Modern (Electricity, Showers, Grill, and Picnic Table) and Primitive (Hike-In Sites, Picnic Table) Campgrounds are available at the Park. Please call ahead at 651-430-8370 for availability and rates. Online Camping Reservations: [Washington County Online Camping Reservations](#)

General Information about the Regatta Site

Map showing location of the regatta site is on the next page.

- The regatta will operate from the boat launch area at Lake Elmo Park Reserve. From Thursday, August 10 to Saturday, August 12, the boat launch area is closed to the public.
- Parking will be limited at this year's regatta. Unlike in previous regattas held at Lake Elmo, parking on grassy area will not be available. Parking will be limited to the South Pavilion Picnic area parking lot. See map on page 15 for other parking locations in the park. Thus, we strongly encourage clubs to car pool as much as possible or charter a bus.
- All other areas of the park will be open to the public with ongoing park activities during the regatta.
- Rowing clubs should be aware of significant amount of regatta setup activities at the boat launch area when they arrive with their boat trailer on Thursday, August 10. Clubs are encouraged to arrive at the regatta site between 9:00 a.m. and 4:00 p.m. Central Time.
- There will be a daily parking fee of \$7 USD per day per vehicle, regardless of vehicle type. Vehicle drivers can purchase a pass for each day, August 10-12, on Thursday, August 10, at the park entrance office.
- Regatta staff will instruct clubs to bring their boat trailer to the launch area to park and unhitch their trailer. From there, clubs can drive their vehicle out of the boat launch area and park it at the South Pavilion Picnic area (See aerial photos of the boat launch area and regatta site).
- With boat trailers parked in the boat launch area, rowing clubs should bring slings for all of their rowing shells.
- Be sure to bring plenty of shade tents to keep athletes, coaches, and parents in the shade to reduce the risk of sun overexposure.
- Observe speed limit posted along park road.
- We strongly encourage all spectators, officials, rowers, coaches, and others to refrain from parking on residential streets in close proximity to Lake Elmo and on County Road 17. This is to protect the property and privacy of the City's residents, and to prevent spectators from parking along city streets and entering the Park from the north end.
- Park has bike trails and inland swimming areas. Bring bikes to visit the starting area or other areas of the park.
- Please do not bring animals to the South Pavilion Picnic Area.
- Overnight tent camping and campfire on regatta site grassy area are not allowed.



Lake Elmo Park Reserve, Washington County, Minnesota

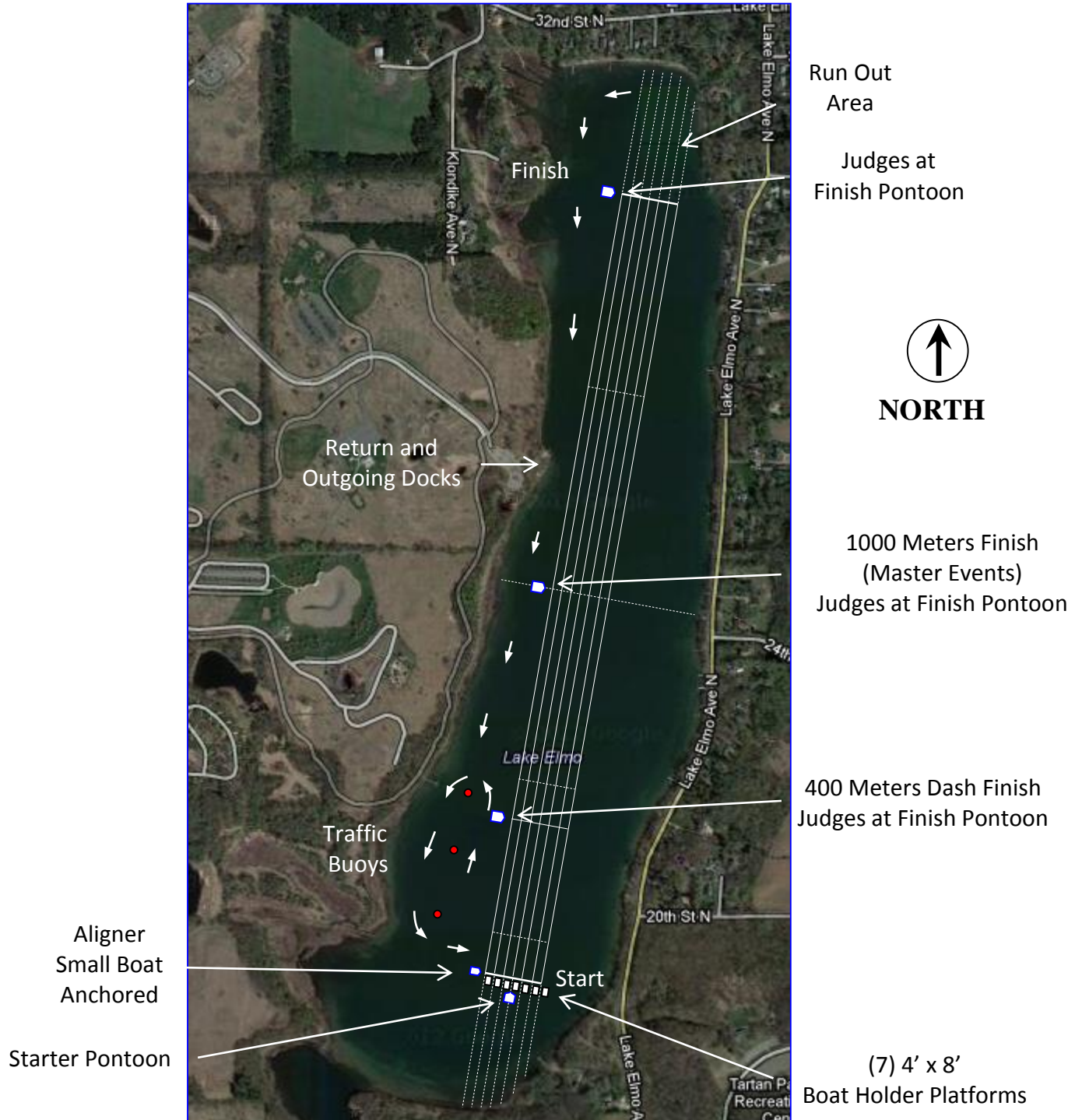
Race Course

2000 Meters Course

Width of each Lane – 15 Meters

Lane 1 West Side (park side of the lake)

Lane 7 East Side (Lake Elmo Avenue North side of the lake)



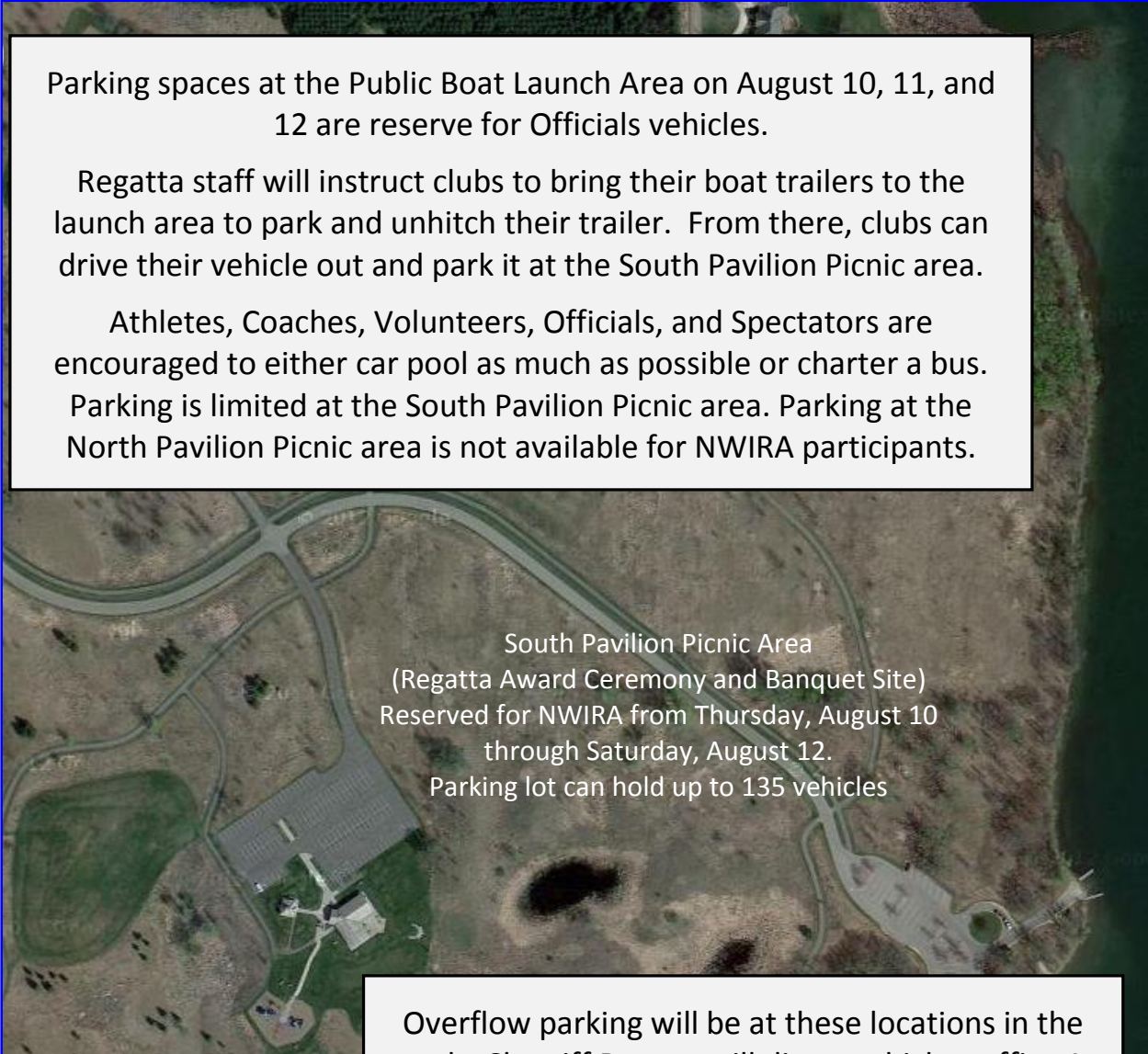
REGATTA SITE AREA

Regatta operations will be conducted from the Public Boat Launch Area at Lake Elmo Park Reserve. The Regatta Award Ceremony and Banquet will be held at the South Pavilion Picnic Area.

Parking spaces at the Public Boat Launch Area on August 10, 11, and 12 are reserve for Officials vehicles.

Regatta staff will instruct clubs to bring their boat trailers to the launch area to park and unhitch their trailer. From there, clubs can drive their vehicle out and park it at the South Pavilion Picnic area.

Athletes, Coaches, Volunteers, Officials, and Spectators are encouraged to either car pool as much as possible or charter a bus. Parking is limited at the South Pavilion Picnic area. Parking at the North Pavilion Picnic area is not available for NWIRA participants.



South Pavilion Picnic Area
(Regatta Award Ceremony and Banquet Site)
Reserved for NWIRA from Thursday, August 10
through Saturday, August 12.
Parking lot can hold up to 135 vehicles

Overflow parking will be at these locations in the park. Sherriff Deputy will direct vehicle traffic. A shuttle van will be available on both days.

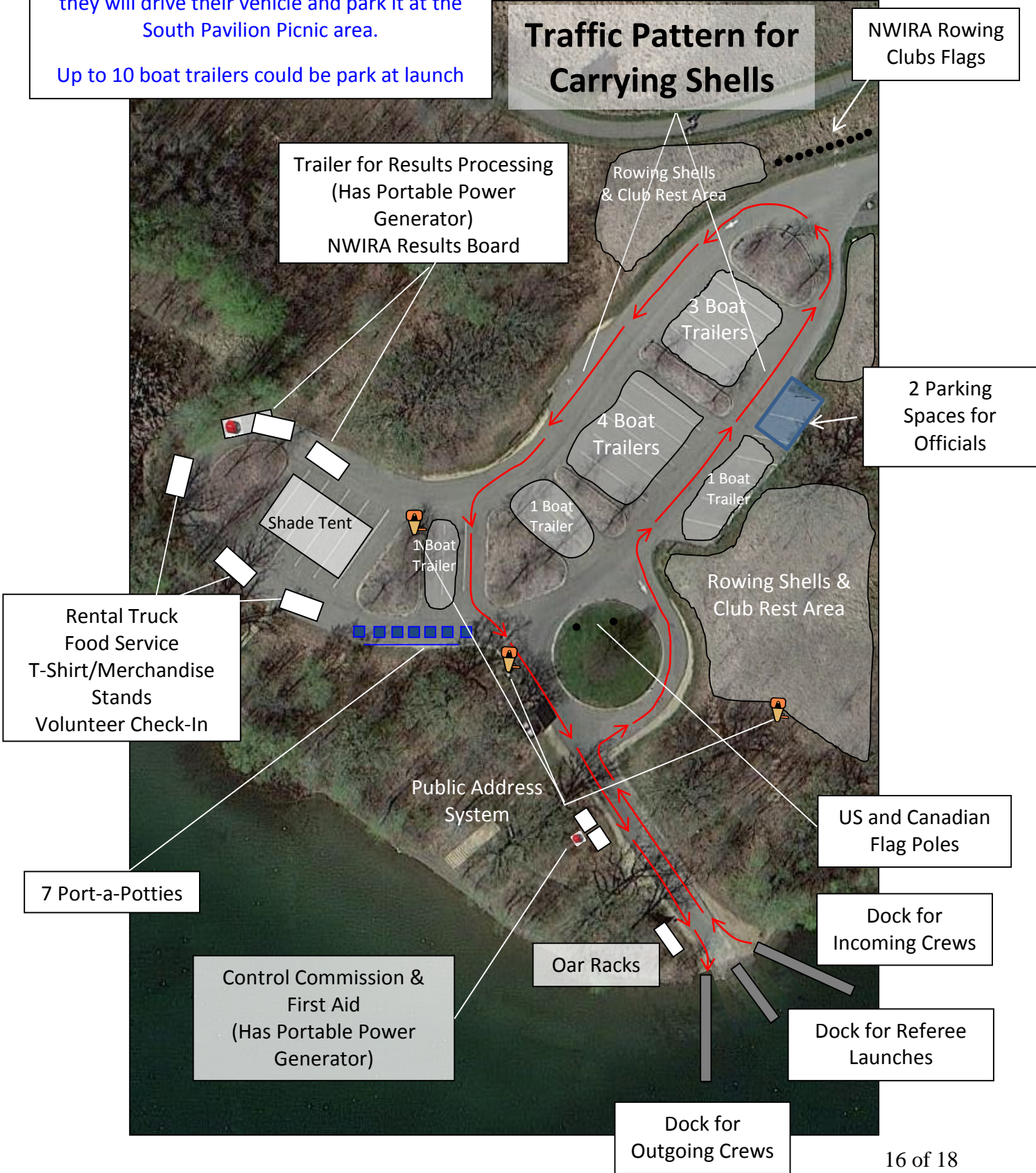
Friday, August 11 - Swim Pond and picnic area
(regatta site is within walking distance)

Saturday, August 12 – Eagle Point Trailhead parking
lot (about a mile and half from regatta site).

AT LAUNCH AREA

Clubs will bring their boat trailer to the launch area to park and unhitch their trailer. Then they will drive their vehicle and park it at the South Pavilion Picnic area.
Up to 10 boat trailers could be park at launch

Traffic Pattern for Carrying Shells





2017 CHAMPIONSHIP REGATTA

ATHLETE SUBSTITUTION / CHANGE FORM

Club / Boat ID: _____

Event # : _____ Event: _____

Current Athlete Name (s) in Boat: _____ New Athlete (s) in Boat: _____

ALL NEW ATHLETES MUST BE LISTED ON CLUB ROSTER

Change(s) made by: _____ Date / Time: _____

Signature: _____

Reason for Change: _____



2017 CHAMPIONSHIP REGATTA

SCRATCH FORM

When submitting this form, scratch fees are equal to the entry fee and they are due at submission. Fees requiring collection after the regatta will be subject to a \$50 USD administration fee per item. Fees are payable in the currency of the regatta site.

Club / Boat ID _____

Event # : _____ Event: _____

Athlete Name (s) in Boat:

Scratch made by: _____ Date / Time: _____

Signature: _____

Reason for Scratch: _____

Scratch Fee: \$