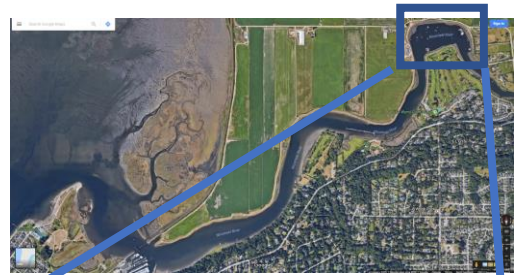
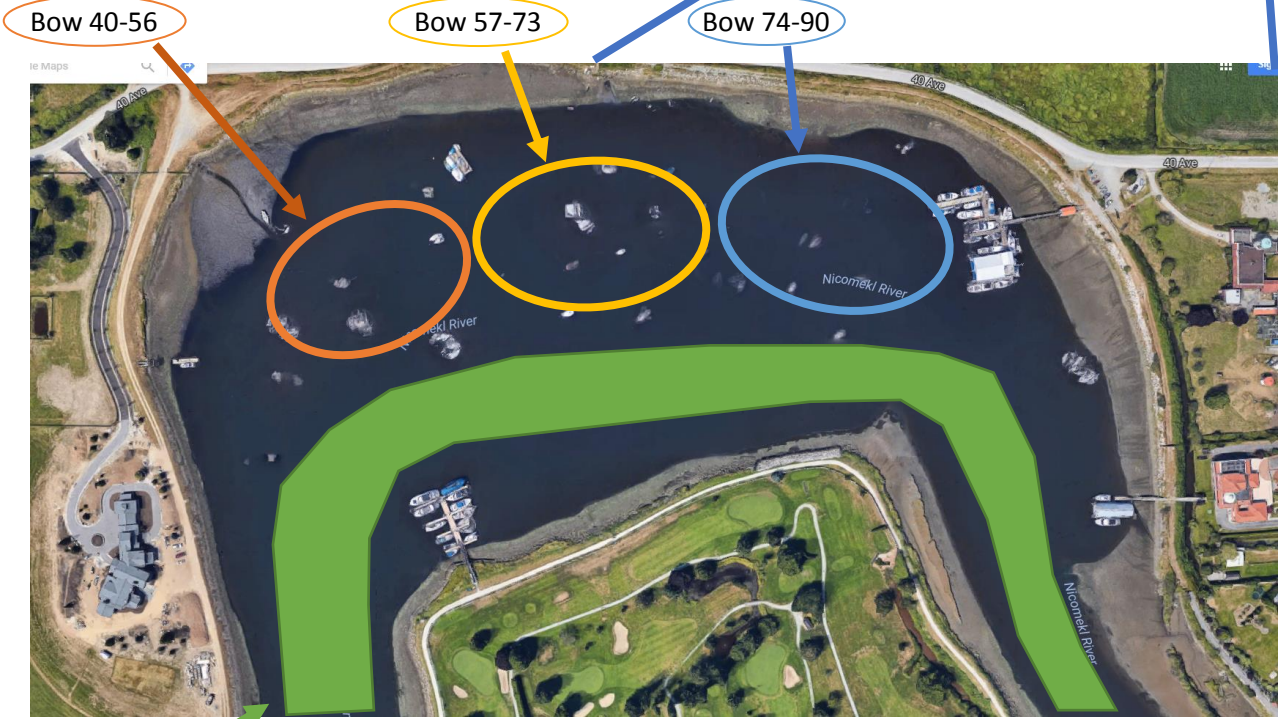


- 9:50-10:10 Wave 1 Launch window
- 10:00-10:20 Wave 2 Launch window
- 10:45-10:55 Wave 1 accumulate in start area as indicated
- 10:45-10:55 Wave 2 accumulate in holding area as indicated
- 11:00 Wave 1 race start
- 11:20 (approx) When final Wave 1 boat has cleared the holding area
- 11:20-11:40 Wave 2 boats move to start area – accumulate as indicated
- 11:40 Wave 2 race start
- 12:40 (approx) Final wave 2 boat reaches finish line



Wave 2 – holding area – Please stay out of the racing line!



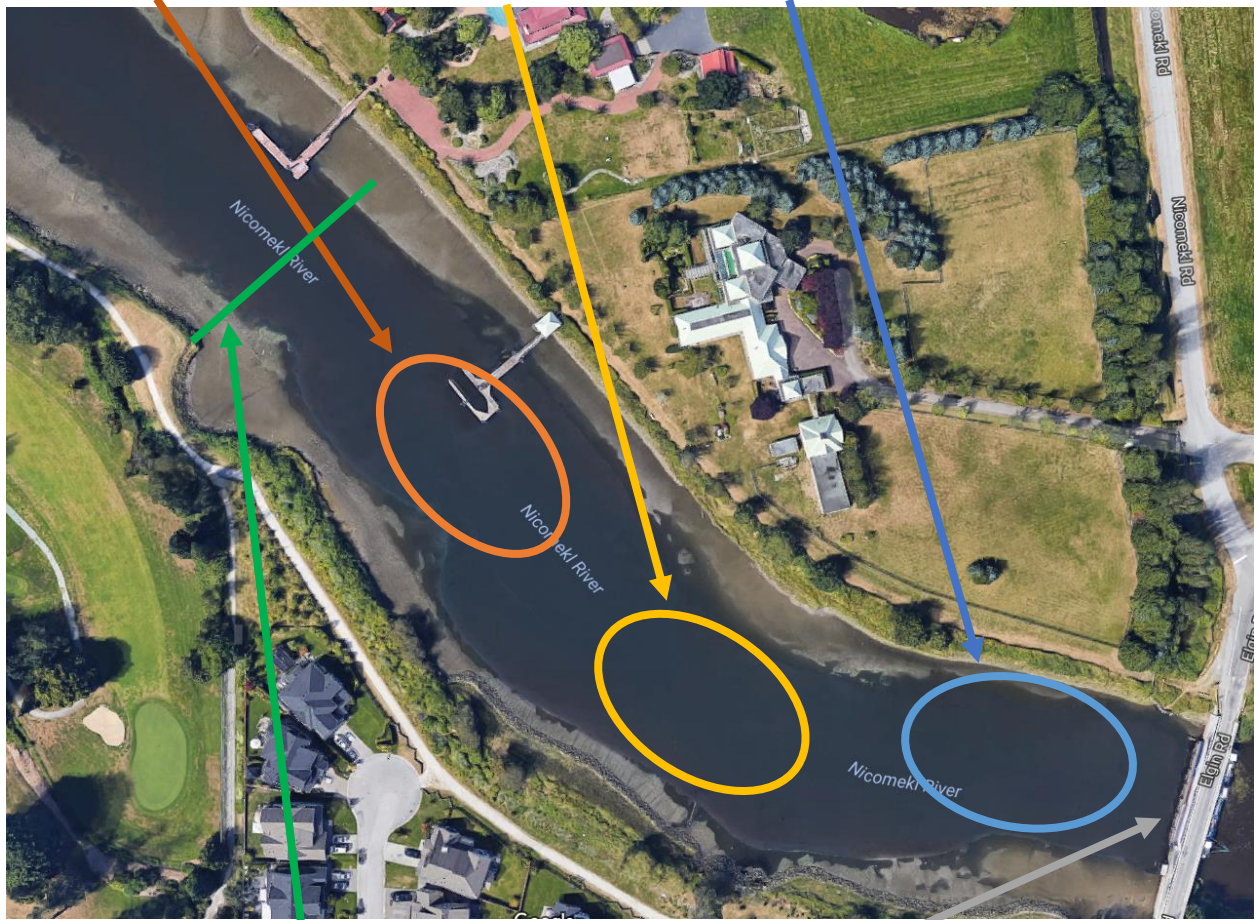
Racing Line

Wave 1 – start accumulation

Bow 1-11

Bow 12-23

Bow 24-33



Start

Dam

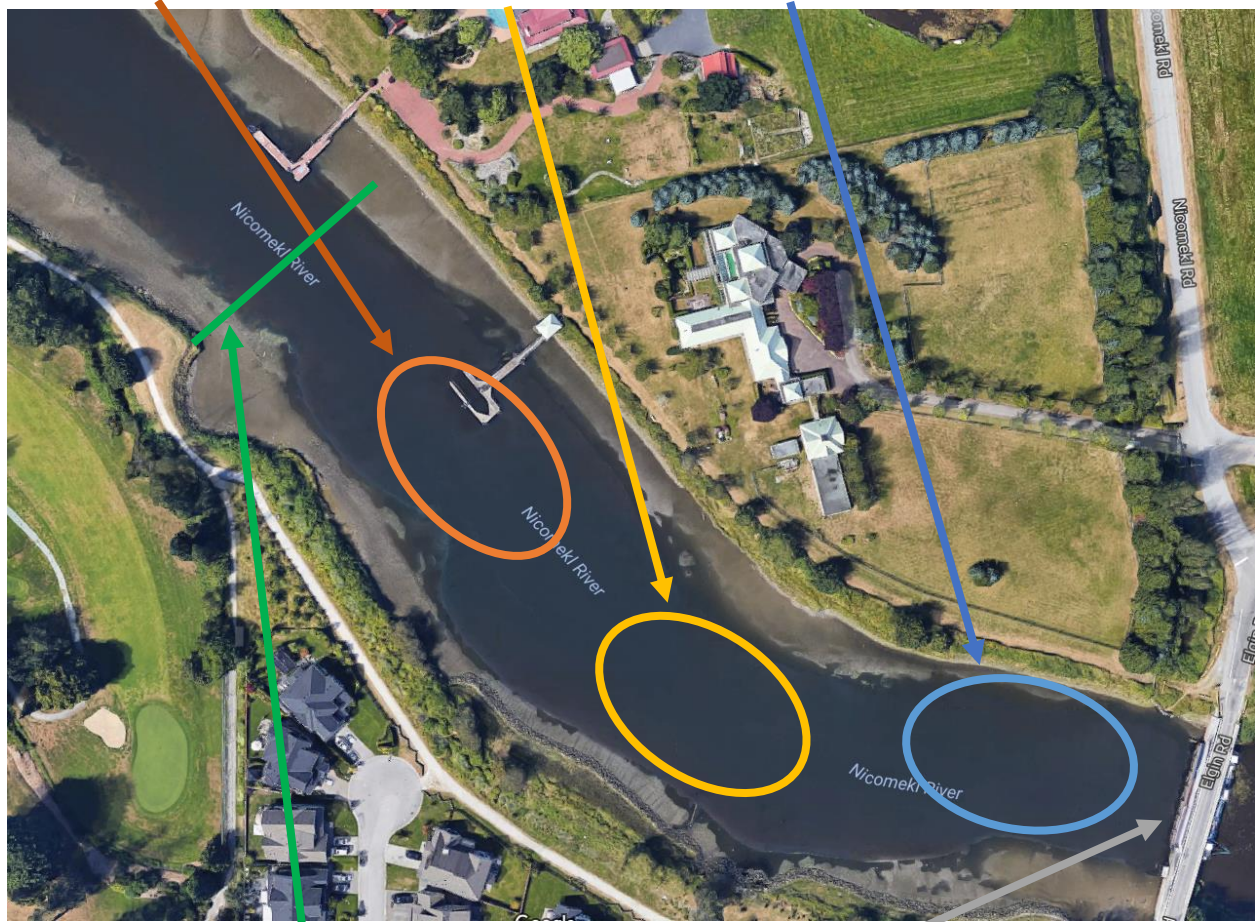


Wave 2 – start accumulation

Bow 40-56

Bow 57-73

Bow 74-90



Start

Dam

\*\*Note Wave 2 rowers late in the start order may be on the water for approximately 2 ½ hours