



**Sunday, July 31<sup>st</sup>**

**Bryant Lake Regional Park  
Eden Prairie, Minnesota**

# Twin Cities Junior Sweeps Regatta

## Sunday, July 31, 2011

### Regatta Packet

- Regatta Location and Parking: The TC Junior Sweeps will be held on Bryant Lake in Eden Prairie, Minnesota. Bryant Lake is part of the Three Rivers Park District. The park is located at 6800 Rowland Road Eden Prairie, MN 55344.
- Regatta Registration will be handled through Regatta Central. Racing will begin approximately 9:00 am, with a Coaches Meeting at 8:00. Actual Race Times will be provided to registered teams the week prior to the Regatta, depending on the number of entries registered for each race.

- The cost for registration will be:

*\$90 for eights*

*\$50 for fours*

*\$30 for doubles / pairs*

- The course will be approximately 1,750 meters long and will begin at the southwest end of the lake. The course will be four lanes.
- Any teams wishing to arrive on Saturday may do so. If you wish to practice on Saturday, you are welcome to do so - beginning at 1:00 pm. However, please note that the course WILL NOT be installed until early Sunday morning and the lake will be open to general boat traffic on Saturday.
- Food and Concessions: The park's concession stand will be open to the general public. Regatta participants can also pre-register for lunch which will be provided by Famous Dave's Restaurant. Please see the attached Regatta Lunch Registration information. (Teams are also welcome to make their own arrangements for lunch.)
- Please make sure that all Minnesota boats have updated state licenses. The local sheriff's department has been known to check. (Boats registered in states other than Minnesota are exempt from this requirement.)
- Regatta Contact Person

**Andy O'Brien**

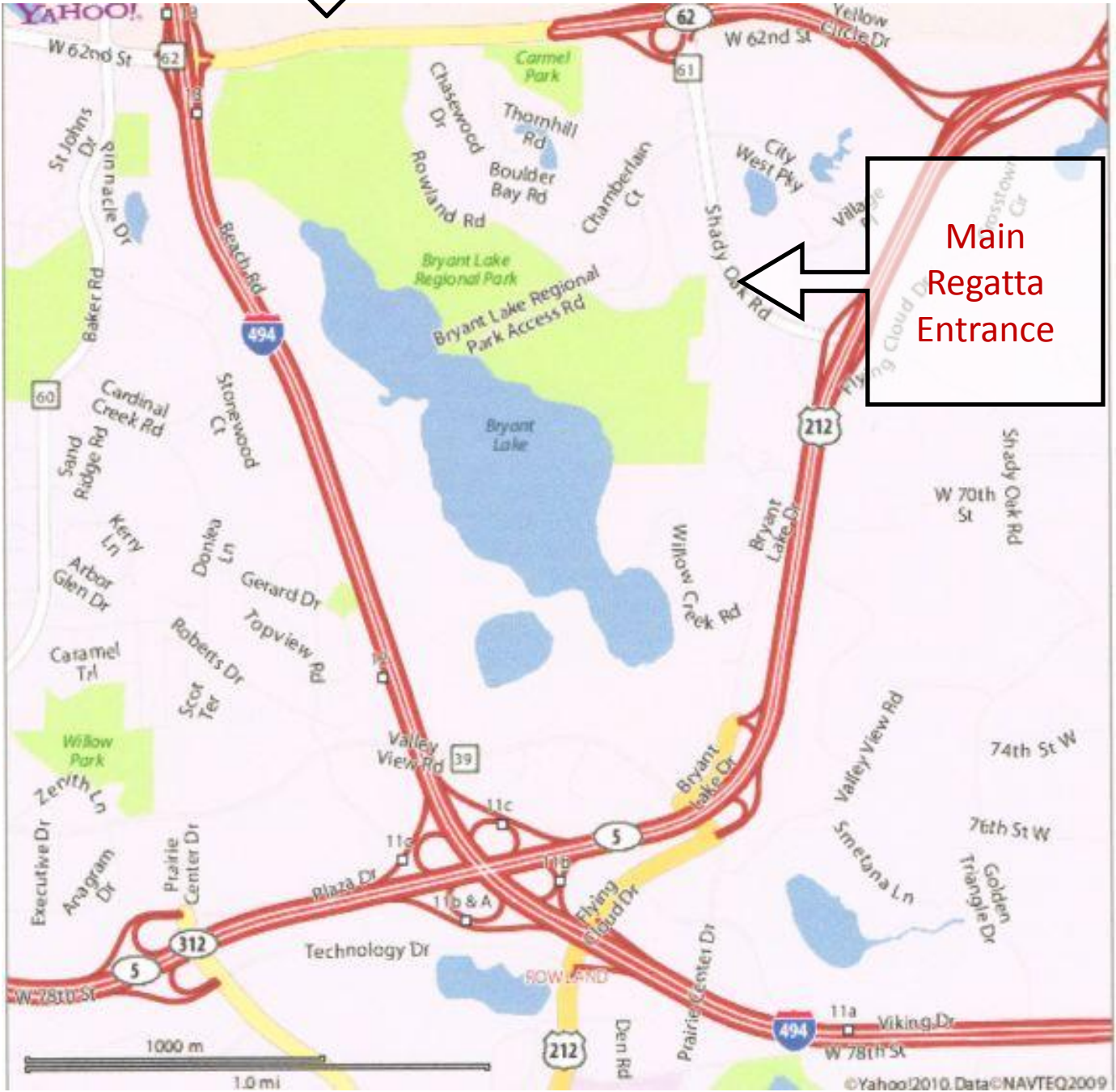
**[obrien1698@comcast.net](mailto:obrien1698@comcast.net)**

**952-221-1698**

**General Parking: From Highway 62, exit on Beach Road.  
NOTE: There is no access from Rowland Road to Highway 62.**

**Spectator Parking**

**Main  
Regatta  
Entrance**



**General Parking: From Highway 62, exit on Beach Road.  
NOTE: There is no access from Rowland Road to Highway 62.**

**Spectator Parking  
Exit from Highway 62  
to Beach Road**

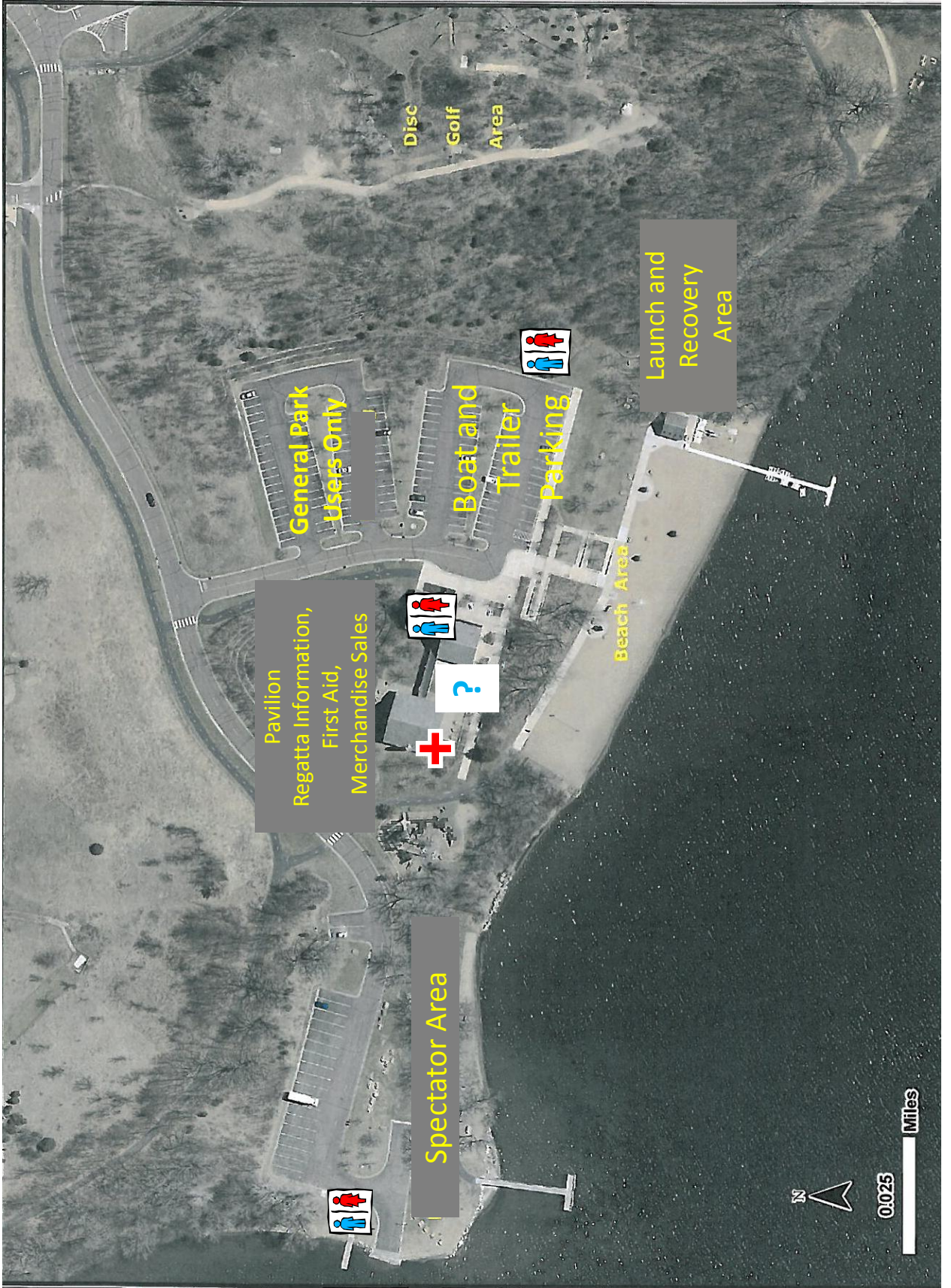
**No Access to Hwy 62  
from Rowland Rd**

**TEAM VEHICLE  
ENTRANCE  
(From Shady Oak Rd)**



# Important Parking Information

- **On site parking is available at the park location for boat trailers and coaches vehicles only.**
- **Please contact the Regatta Chair for Permitted Access to the Onsite Parking.**
- **General Parking for additional vehicles and spectators will be available at the International School of Minnesota campus located on the north end of the lake.**
- **The Off Site Parking location is approximately 1/4 mile by walking trail. There will also be a shuttle bus transporting people from the parking location to the race site.**
- **Vehicles with Handicapped Parking Permits will be allowed parking at the Race Site.**



Disc  
Golf  
Area

Launch and  
Recovery  
Area

General Park  
Users Only

Boat and  
Trailer  
Parking

Beach Area

Pavilion  
Regatta Information,  
First Aid,  
Merchandise Sales

Spectator Area



0.025

Miles



Finish Line

Park Entrance

Boat Launch and Retrieval at TRPD access

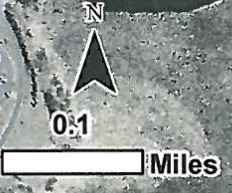
Parking

Beach Area

Warm Up Area

4 lanes  
Approx. length  
1750 m

Starting Line



# Regatta Lunch



- A Regatta Lunch catered from Famous Dave's Barbecue is available for pre-purchase.
- Teams wishing to pre-register for lunch can sign up through Regatta Central. Tickets will be provided upon check-in the morning of the regatta.
- Lunch Menu:
  - Sandwich (Either pulled pork or chicken) (sauce on the side)
  - Baked Wilbur Beans
  - Cole Slaw
  - Bottle of Water
- Lunch price: \$8.00 per meal.
- Meals will be available on a pre-purchase basis only. Unfortunately, we will be unable to sell meals on the day of the regatta.
- However, a general concession stand will be open and clubs are welcome to make their own lunch arrangements.