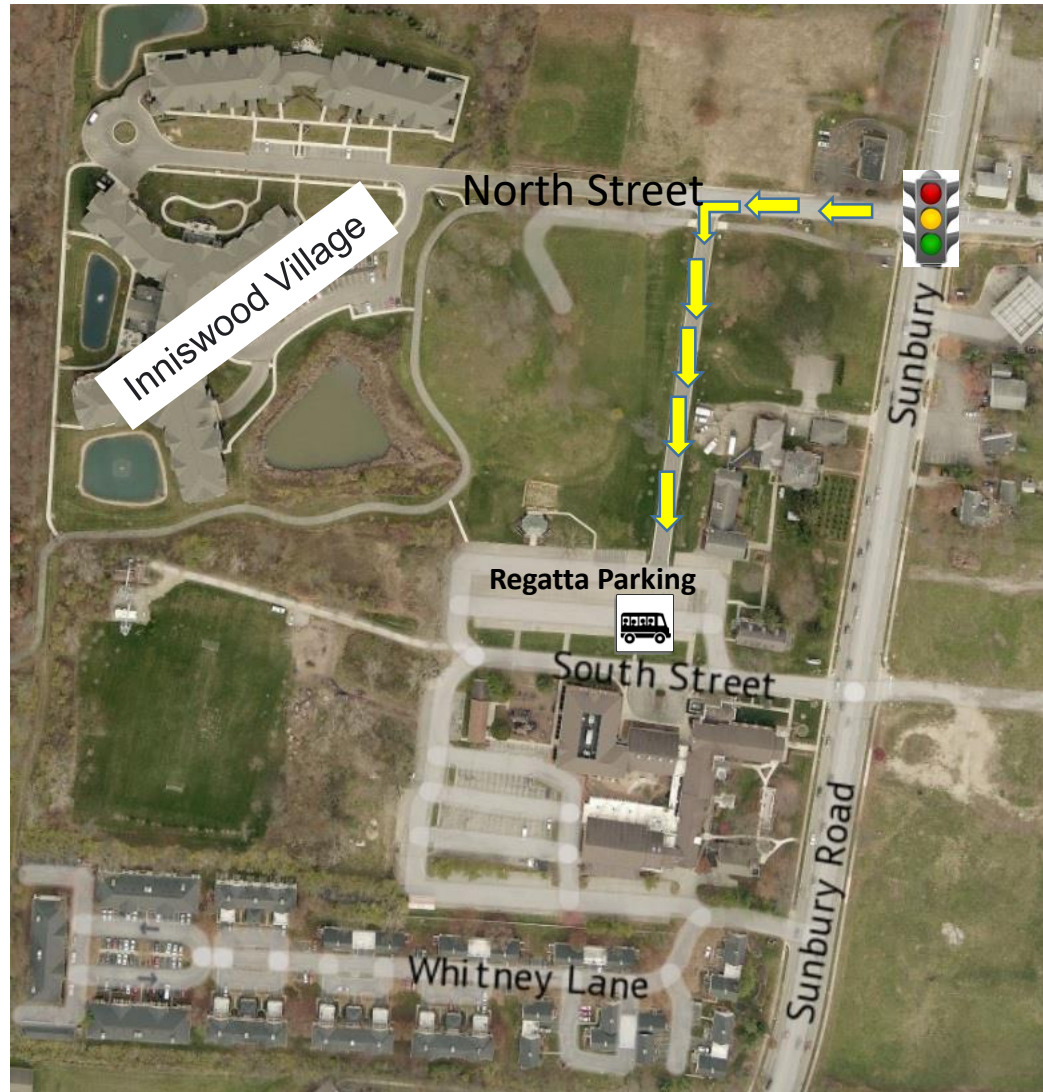


The Hoover – Fall Classic 2021 Parking



Parking for spectators is available at **Central College Presbyterian Church at 975 S Sunbury Rd** south of the regatta venue. There are also spots available curbside on the **WEST SIDE** of Sunbury Road (Designated areas on the East side are for utility trailers and buses only!) There will be two shuttle vans to assist from the remote lot.

There is no overnight/RV parking permitted by spectators.

There is no parking at the Hoover Dam Parking Lots this year due to construction.

The entrance to the remote regatta parking lot area is **NEW and may not be updated in your GPS system.**



Shuttle stop will be located on the south side of the parking lot.

Shuttle riders are requested to wear face masks. Shuttles will run until 4PM.